



## G1562 Portable Eyewash / Drench Hose Units



Guardian Equipment is a worldwide leader in the manufacture of emergency eyewash and shower technology. Our products are used in industrial plants, science laboratories, commercial institutions and other facilities all over the world. In the event of an accident or spill, Guardian products are relied upon to deliver high volumes of water to rinse away hazardous chemicals.

Guardian is pleased to introduce an updated and expanded range of 15 gallon portable eyewash and drench hose units. These units offer enhanced performance and versatility over older models of these units.

The older design units utilized a pressure regulator to regulate the water flow. The new units incorporate a flow control that consistently regulates the flow to achieve the full 15 minute flushing time required by ANSI Z358.1-2014 "Emergency Eyewash and Shower Equipment." This eliminates the need for any field adjustment of the flow and removes the possibility that the flow might not comply with the standard.

Due to their rugged stainless steel construction, these units weigh 35 lbs. (15.9kg) when empty and 116 lbs. (52.6kg) when filled with water. They can therefore be difficult to handle and move. To address this issue, we are introducing new models that include either a stainless steel dolly or a hand truck. The dolly and hand truck make it easy to move the units to wherever a hazard is located. The units can also be handled easily when testing, refilling and maintenance are required.

For fifty years, Guardian has been the innovation leader in emergency eyewash and shower technology. We were the first to introduce a larger capacity portable unit to provide enhanced protection for employees working in remote areas or where a plumbed-in water source is not available. We are proud to continue this tradition with these enhanced portable units that better meet the needs of our customers.



### **G1562** Portable Eyewash/Drench Hose Unit, 15 Gallon

**Application:** Portable eyewash/drench hose unit uses air pressure to deliver 10 gallons (37.5 liters) of water for 15 minutes. For use in low hazard areas where a continuous supply of water is not available.

**Installation:** Unit can be placed in any area where hazards are present. Available with optional dolly or hand truck for ease of movement (see below). To prepare unit for use, fill with 10 gallons (37.5L) of clean potable water and add bacteriostatic additive (supplied with unit). Bacteriostatic additive protects against growth of bacteria, fungus, algae and acanthamoeba. After filling, pressurize with 80 PSI (5.5 bar) air pressure.

**Tank:** 15 gallon (56L) stainless steel tank. Tank has built-in carrying handles, air intake valve, pressure gauge and pressure relief valve.

**Eyewash:** Use to wash user's eyes for 15 minutes. Furnished with (2) GS-Plus low flow spray heads with "flip top" dust covers, integral flow controls and filters. Valve is ½" IPS chrome plated brass ball valve with flag handle. User's hands are free while eyewash is in operation.

**Drench Hose:** For rinsing any part of the user's eyes, face or body. Furnished with single GS-Plus spray head, self-closing valve with handle and 6 foot (2m) reinforced PVC hose.

**Discharge Time:** Eyewash delivers .7 GPM (2.6L/min) for 15 minutes. Drench hose delivers 1.7 GPM (6.4L/min) for 6 minutes. Discharge time is less if eyewash and drench hose are used simultaneously.

**Weight:** 35 lbs. (15.9kg) empty, 116 lbs. (52.6kg) filled.

**Sign:** Furnished with ANSI-compliant sign.

**Quality Assurance:** Unit is assembled and factory tested prior to shipment.

**Maintenance:** Unit must be inspected regularly. Refill unit after testing or use. Water and bacteriostatic additive must be changed at least once every six months.

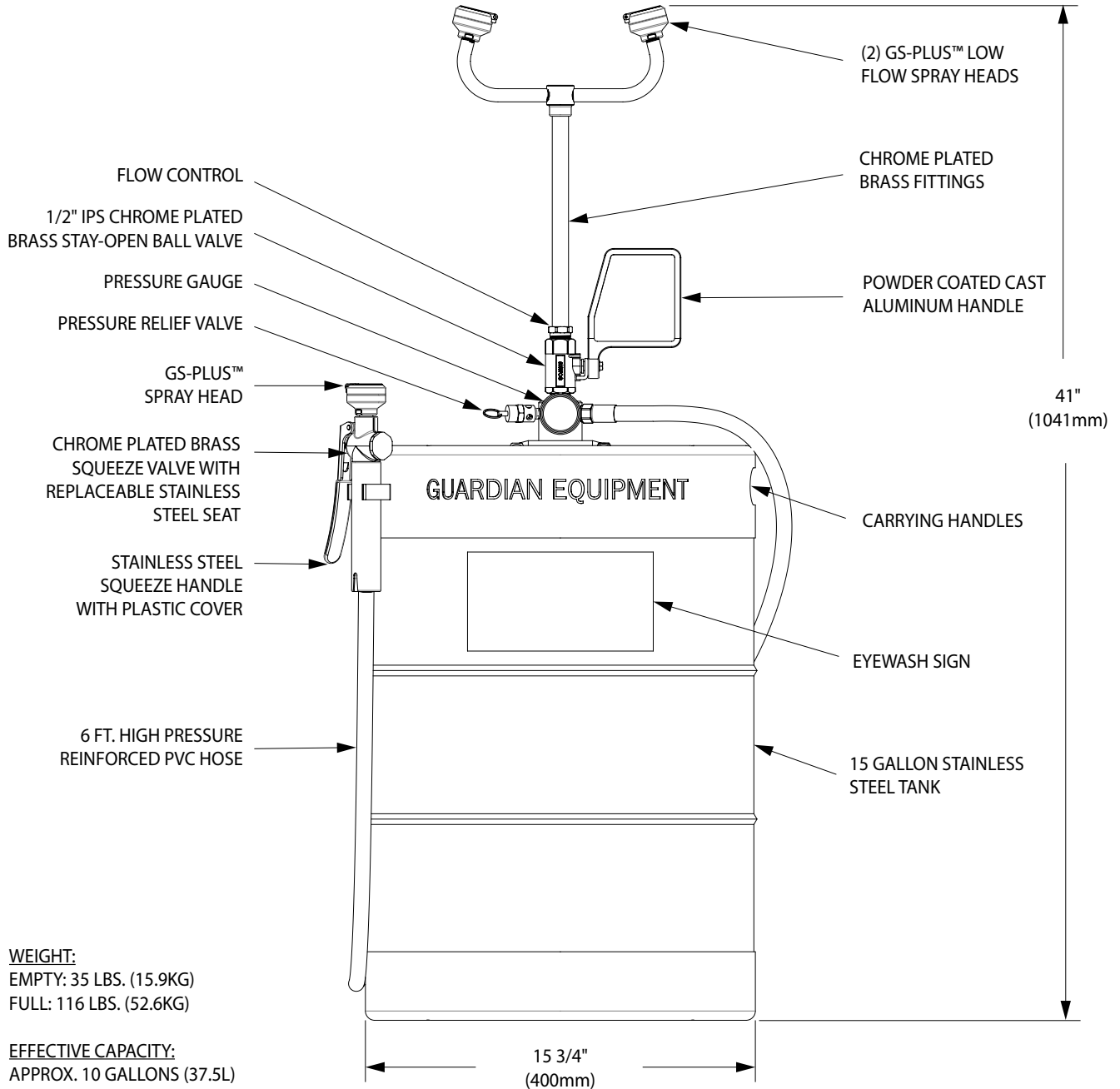
### Available Options

- G1540BA-R** Case of (4) replacement bottles of bacteriostatic additive.
- G1562DOL** G1562 portable unit mounted on four-wheel dolly for ease of movement.
- AP250-100** Dolly only.
- G1562HAT** G1562 portable unit mounted on two-wheel hand truck for ease of movement.
- AP200-013** Hand truck only.





### **G1562** Portable Eyewash/Drench Hose Unit, 15 Gallon



Rev. 031521

THIS SPACE FOR ARCHITECT/ENGINEER APPROVAL

Sign Included



Due to continuing product improvement, the information contained in this document is subject to change without notice. All dimensions are ± 1/4" (6mm). rev. 031521





### **G1562DOL** Portable Eyewash/Drench Hose Unit, 15 Gallon, with Dolly

**Application:** Portable eyewash/drench hose unit uses air pressure to deliver 10 gallons (37.5 liters) of water for 15 minutes. For use in low hazard areas where a continuous supply of water is not available. Unit is mounted on stainless steel dolly for ease of installation and movement.

**Installation:** Unit can be placed in any area where hazards are present. To prepare unit for use, fill with 10 gallons (37.5L) of clean potable water and add bacteriostatic additive (supplied with unit). Bacteriostatic additive protects against growth of bacteria, fungus, algae and acanthamoeba. After filling, pressurize with 80 PSI (5.5 bar) air pressure.

**Dolly:** Unit is mounted on dolly for ease of installation and movement. Dolly has stainless steel platform with (4) polyurethane non-marking lockable wheels.

**Tank:** 15 gallon (56L) stainless steel tank. Tank has built-in carrying handles, air intake valve, pressure gauge and pressure relief valve.

**Eyewash:** Use to wash user's eyes for 15 minutes. Furnished with (2) GS-Plus low flow spray heads with "flip top" dust covers, integral flow controls and filters. Valve is ½" IPS chrome plated brass ball valve with flag handle. User's hands are free while eyewash is in operation.

**Drench Hose:** For rinsing any part of the user's eyes, face or body. Furnished with single GS-Plus spray head, self-closing valve with handle and 6 foot (2m) reinforced PVC hose.

**Discharge Time:** Eyewash delivers .7 GPM (2.6L/min) for 15 minutes. Drench hose delivers 1.7 GPM (6.4L/min) for 6 minutes. Discharge time is less if eyewash and drench hose are used simultaneously.

**Weight:** 46 lbs. (20.9kg) empty, 127 lbs. (57.6kg) filled.

**Sign:** Furnished with ANSI-compliant sign.

**Quality Assurance:** Unit is assembled and factory tested prior to shipment.

**Maintenance:** Unit must be inspected regularly. Refill unit after testing or use. Water and bacteriostatic additive must be changed at least once every six months.

**Shipping Note:** Due to the size of the components, this unit is shipped in two cartons.

### Available Options

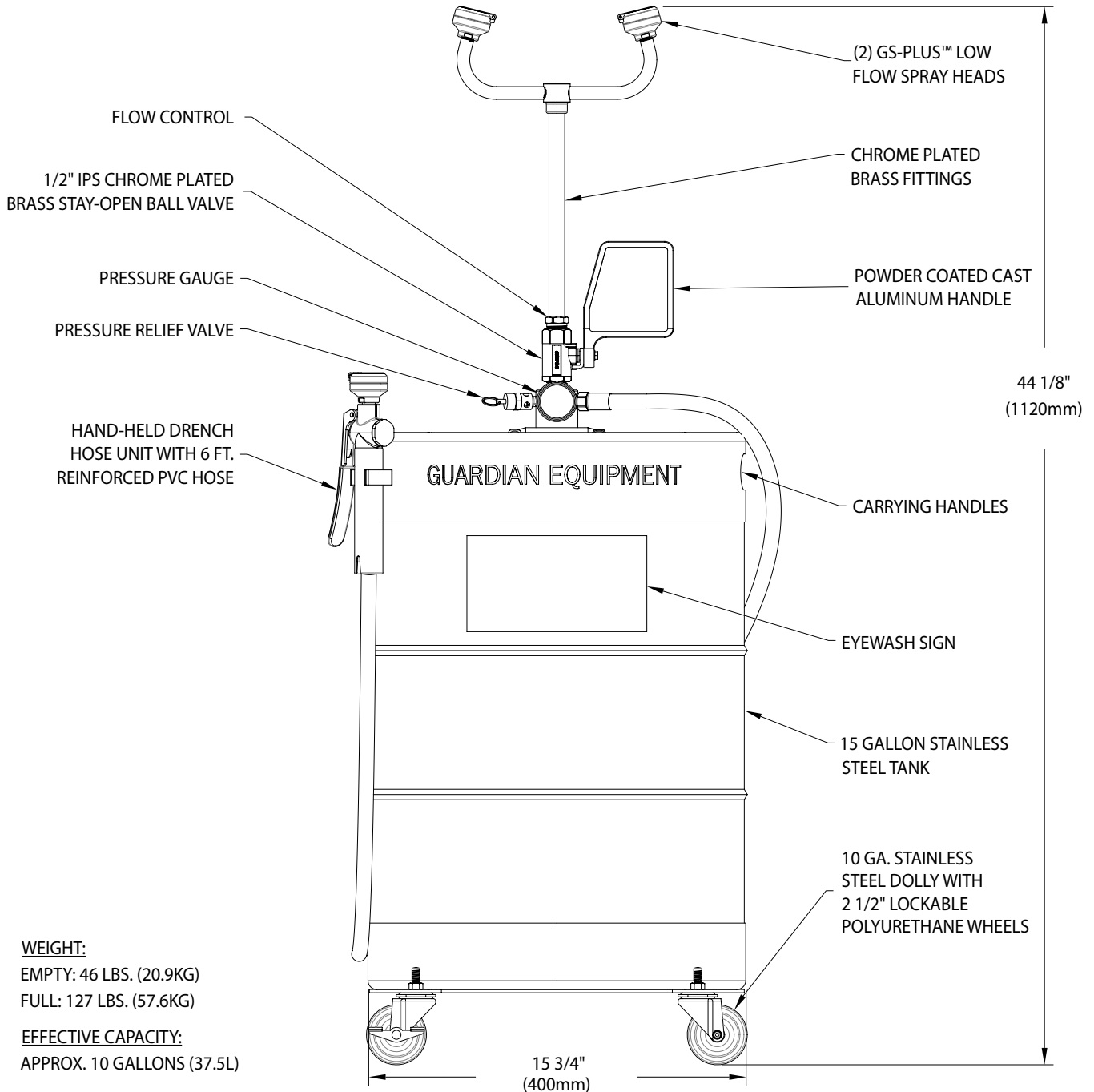
**G1540BA-R** Case of (4) replacement bottles of bacteriostatic additive.

**AP250-100** Dolly only.





### **G1562DOL** Portable Eyewash/Drench Hose Unit, 15 Gallon, with Dolly



**WEIGHT:**

EMPTY: 46 LBS. (20.9KG)

FULL: 127 LBS. (57.6KG)

**EFFECTIVE CAPACITY:**

APPROX. 10 GALLONS (37.5L)

Rev. 031521

THIS SPACE FOR ARCHITECT/ENGINEER APPROVAL

Sign Included



Due to continuing product improvement, the information contained in this document is subject to change without notice. All dimensions are ± 1/4" (6mm). rev. 031521





### **G1562HAT** Portable Eyewash/Drench Hose Unit, 15 Gallon, with Hand Truck

**Application:** Portable eyewash/drench hose unit uses air pressure to deliver 10 gallons (37.5 liters) of water for 15 minutes. For use in low hazard areas where a continuous supply of water is not available. Unit is mounted on two wheel hand truck for ease of installation and movement.

**Installation:** Unit can be placed in any area where hazards are present. To prepare unit for use, fill with 10 gallons (37.5L) of clean potable water and add bacteriostatic additive (supplied with unit). Bacteriostatic additive protects against growth of bacteria, fungus, algae and acanthamoeba. After filling, pressurize with 80 PSI (5.5 bar) air pressure.

**Hand Truck:** Unit is mounted on two-wheel hand truck for ease of installation and movement. Hand truck has painted steel frame with handles and (2) rubber wheels. Unit is secured to truck with clamp.

**Tank:** 15 gallon (56L) stainless steel tank. Tank has built-in carrying handles, air intake valve, pressure gauge and pressure relief valve.

**Eyewash:** Use to wash user's eyes for 15 minutes. Furnished with (2) GS-Plus low flow spray heads with "flip top" dust covers, integral flow controls and filters. Valve is 1/2" IPS chrome plated brass ball valve with flag handle. User's hands are free while eyewash is in operation.

**Drench Hose:** For rinsing any part of the user's eyes, face or body. Furnished with single GS-Plus spray head, self-closing valve with handle and 6 foot (2m) reinforced PVC hose.

**Discharge Time:** Eyewash delivers .7 GPM (2.6L/min) for 15 minutes. Drench hose delivers 1.7 GPM (6.4L/min) for 6 minutes. Discharge time is less if eyewash and drench hose are used simultaneously.

**Weight:** 75 lbs. (34kg) empty, 156 lbs. (70.8kg) filled.

**Sign:** Furnished with ANSI-compliant sign.

**Quality Assurance:** Unit is assembled and factory tested prior to shipment.

**Maintenance:** Unit must be inspected regularly. Refill unit after testing or use. Water and bacteriostatic additive must be changed at least once every six months.

**Shipping Note:** Due to the size of the components, this unit is shipped in two cartons.

### Available Options

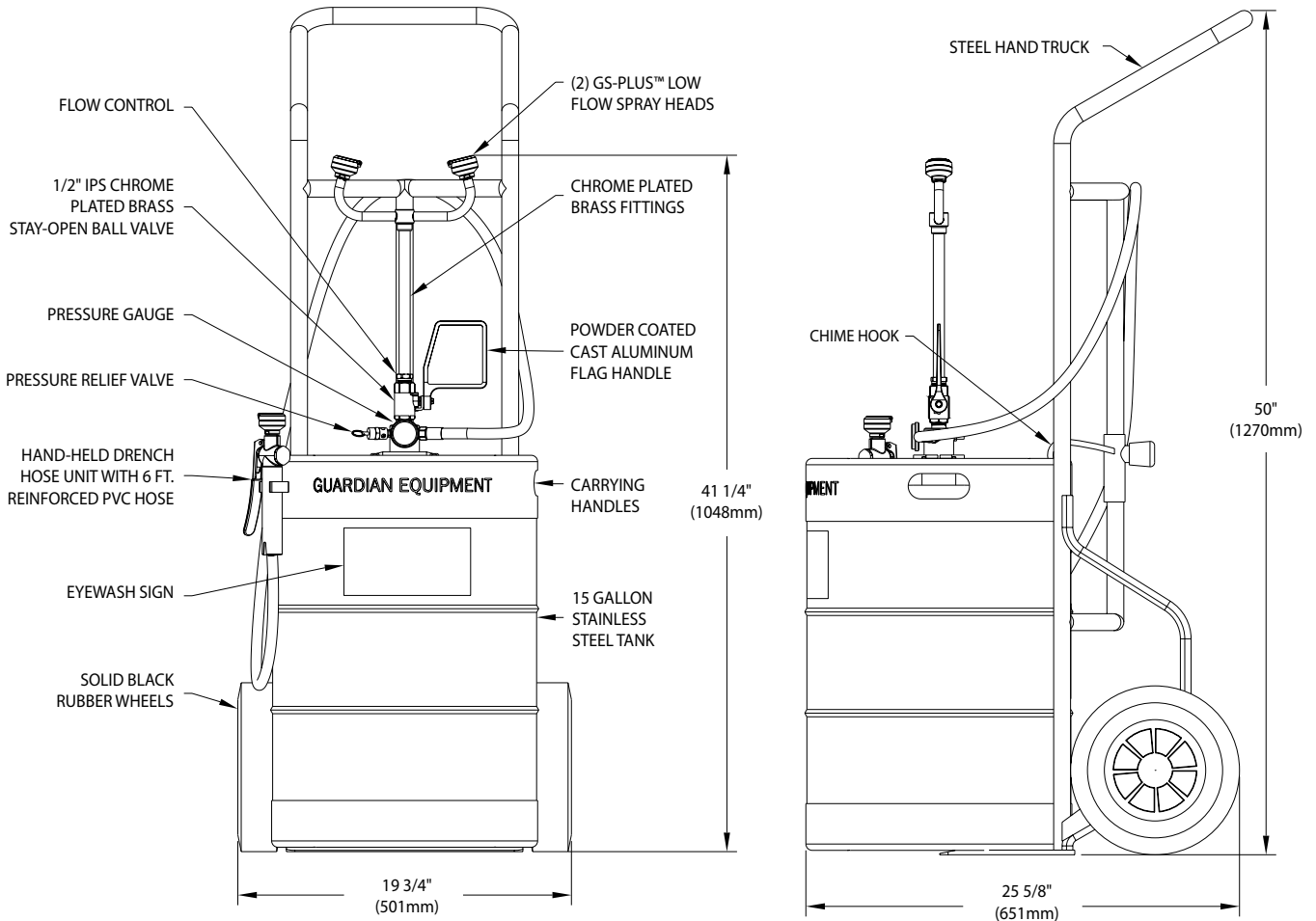
**G1540BA-R** Case of (4) replacement bottles of bacteriostatic additive.

**AP200-013** Hand truck only.





### **G1562HAT** Portable Eyewash/Drench Hose Unit, 15 Gallon, with Hand Truck



**WEIGHT:**  
 EMPTY: 75 LBS. (34KG)  
 FULL: 156 LBS. (70.8KG)

**EFFECTIVE CAPACITY:**  
 APPROX. 10 GALLONS (38L)

Rev. 031521

THIS SPACE FOR ARCHITECT/ENGINEER APPROVAL

Due to continuing product improvement, the information contained in this document is subject to change without notice. All dimensions are ± 1/4" (6mm). rev. 031521

Sign Included



Guardian Equipment 312 447 8100 TELEPHONE  
 1140 N North Branch St 312 447 8101 FACSIMILE  
 Chicago, IL 60642 gesafety.com

Listed 8116. Units have been tested to and comply with ANSI Z358.1-2014 and the Uniform Plumbing Code.





### **G1562HTR** Portable Eyewash/Drench Hose Unit, 15 Gallon, Heated

**Application:** ANSI Z358.1-2014 “Emergency Eyewash and Shower Equipment” requires that the water delivered by an emergency eyewash be “tepid”, which is defined as between 60° and 100° F (15.5°- 37.8° C). The G1562HTR portable eyewash/drench hose unit is electrically heated and insulated, making it ideal for use in areas where ambient temperatures may drop below the tepid range. In extreme conditions, the heating system will also protect the unit against freezing.

The G1562HTR heated portable eyewash/drench hose unit uses air pressure to deliver 10 gallons (37.5L) of water for 15 minutes. For use in low hazard areas where a continuous supply of water is not available.

**Installation:** Unit can be placed in any area where hazards are present. Available with optional dolly or hand truck for ease of movement (see below). To prepare unit for use, fill with 10 gallons (37.5L) of clean potable water and add bacteriostatic additive (supplied with unit). Bacteriostatic additive protects against growth of bacteria, fungus, algae and acanthamoeba. After filling, pressurize with 80 PSI (5.5 bar) air pressure.

**Heating System:** Silicone drum heater is attached to outside of tank. Thermostat set to 65° F (18.3° C) senses the temperature of the water inside the tank to turn the heater on and off. Heater requires 15 amp, 120 volt power supply. Total amp draw is 3.33 amps. Furnished with 9 ft. cord with ground fault circuit interrupter (GFCI) plug and manual reset.

**Exterior Jacket:** High visibility orange insulated nylon jacket contains heat to maintain water temperature and protects unit against freezing. Jacket is waterproof and resistant to mildew.

**Tank:** 15 gallon (56L) stainless steel tank. Tank has built-in carrying handles, air intake valve, pressure gauge and pressure relief valve.

**Eyewash:** Use to wash user’s eyes for 15 minutes. Furnished with (2) GS-Plus low flow spray heads with “flip top” dust covers, integral flow controls and filters. Valve is ½" IPS chrome plated brass self-draining ball valve with flag handle. User’s hands are free while eyewash is in operation. Self-draining valve allows water to drain out from spray heads after use.

**Drench Hose:** For rinsing any part of the user’s eyes, face or body. Furnished with single GS-Plus spray head, self-closing valve with handle and 6 foot (2m) reinforced PVC hose.

**Discharge Time:** Eyewash delivers .7 GPM (2.6L/min) for 15 minutes. Drench hose delivers 1.7 GPM (6.4L/min) for 6 minutes. Discharge time is less if eyewash and drench hose are used simultaneously.

**Weight:** 42 lbs. (19kg) empty, 123 lbs. (55.8kg) filled.

**Sign:** Furnished with ANSI-compliant sign.

**Quality Assurance:** Unit is assembled and factory tested prior to shipment.



**Maintenance:** Unit must be inspected regularly. Refill unit after testing or use. Water and bacteriostatic additive must be changed at least once every six months.

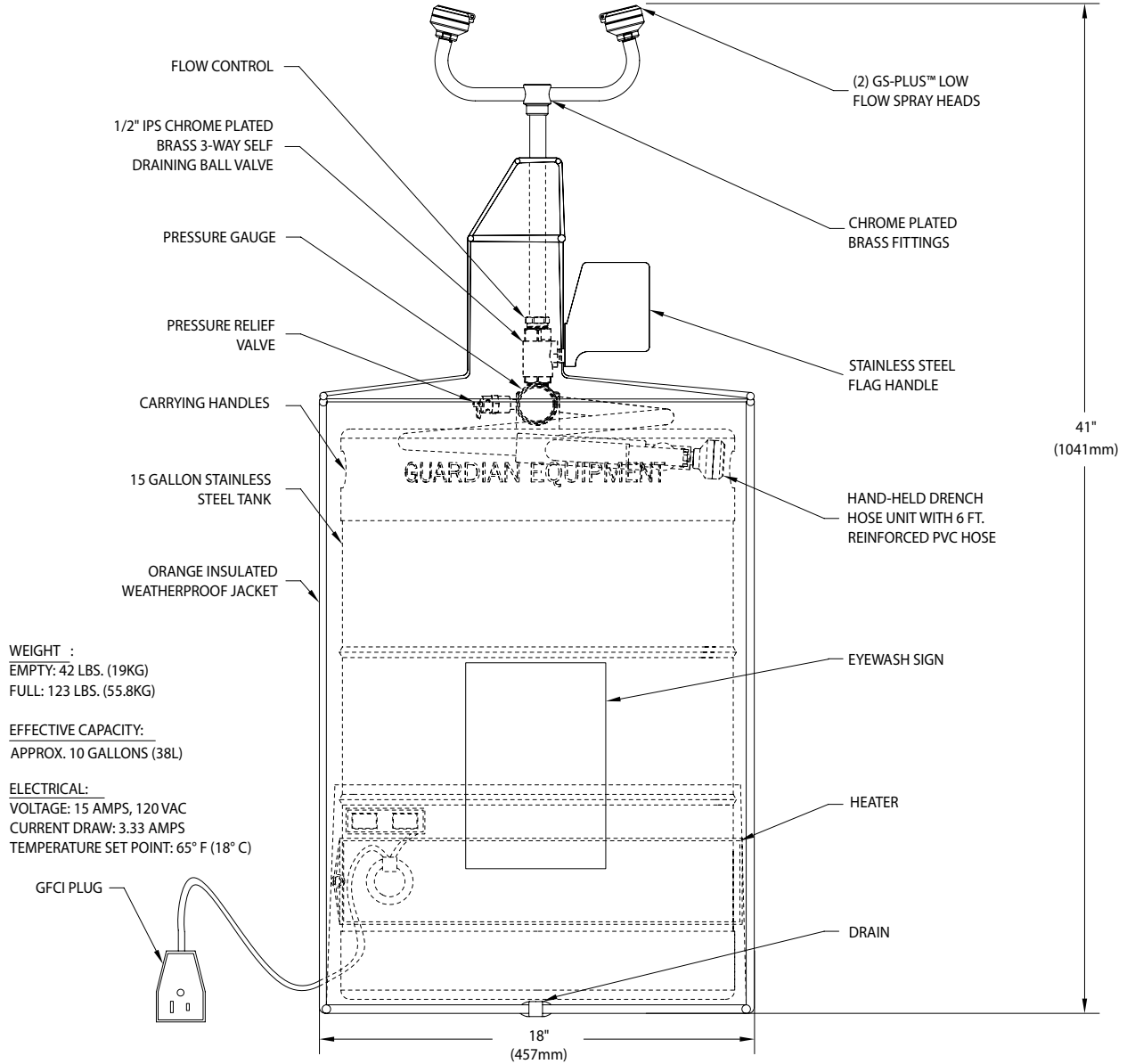
#### Available Options

- G1540BA-R** Case of (4) replacement bottles of bacteriostatic additive.
- G1562HTR-DOL** G1562HTR portable unit mounted on four-wheel dolly for ease of movement.
- AP250-100** Dolly only.
- G1562HTR-HAT** G1562HTR portable unit mounted on two-wheel hand truck for ease of movement.
- AP200-013** Hand truck only.





### **G1562HTR** Portable Eyewash/Drench Hose Unit, 15 Gallon, Heated



Rev. 031521

THIS SPACE FOR ARCHITECT/ENGINEER APPROVAL

Sign Included



Due to continuing product improvement, the information contained in this document is subject to change without notice. All dimensions are ± 1/4" (6mm). rev. 031521

Guardian Equipment 312 447 8100 TELEPHONE  
1140 N North Branch St 312 447 8101 FACSIMILE  
Chicago, IL 60642 gesafety.com

Listed 8116. Units have been tested to and comply with ANSI Z358.1-2014 and the Uniform Plumbing Code.





### **G1562HTR-DOL** Portable Eyewash/Drench Hose Unit, 15 Gallon, Heated, with Dolly

**Application:** ANSI Z358.1-2014 “Emergency Eyewash and Shower Equipment” requires that the water delivered by an emergency eyewash be “tepid”, which is defined as between 60° and 100° F (15.5°- 37.8° C). The G1562HTR-DOL portable eyewash/drench hose unit is electrically heated and insulated, making it ideal for use in areas where ambient temperatures may drop below the tepid range. In extreme conditions, the heating system will also protect the unit against freezing.

The G1562HTR-DOL heated portable eyewash/drench hose unit uses air pressure to deliver 10 gallons (37.5L) of water for 15 minutes. For use in low hazard areas where a continuous supply of water is not available.

**Installation:** Unit can be placed in any area where hazards are present. To prepare unit for use, fill with 10 gallons (37.5L) of clean potable water and add bacteriostatic additive (supplied with unit). Bacteriostatic additive protects against growth of bacteria, fungus, algae and acanthamoeba. After filling, pressurize with 80 PSI (5.5 bar) air pressure.

**Dolly:** Unit is mounted on dolly for ease of installation and movement. Dolly has stainless steel platform with (4) polyurethane non-marking lockable wheels.

**Heating System:** Silicone drum heater is attached to outside of tank. Thermostat set to 65° F (18.3° C) senses the temperature of the water inside the tank to turn the heater on and off. Heater requires 15 amp, 120 volt power supply. Total amp draw is 3.33 amps. Furnished with 9 ft. cord with ground fault circuit interrupter (GFCI) plug and manual reset.

**Exterior Jacket:** High visibility orange insulated nylon jacket contains heat to maintain water temperature and protects unit against freezing. Jacket is waterproof and resistant to mildew.

**Tank:** 15 gallon (56L) stainless steel tank. Tank has built-in carrying handles, air intake valve, pressure gauge and pressure relief valve.

**Eyewash:** Use to wash user’s eyes for 15 minutes. Furnished with (2) GS-Plus low flow spray heads with “flip top” dust covers, integral flow controls and filters. Valve is ½" IPS chrome plated brass self-draining ball valve with flag handle. User’s hands are free while eyewash is in operation. Self-draining valve allows water to drain out from spray heads after use.

**Drench Hose:** For rinsing any part of the user’s eyes, face or body. Furnished with single GS-Plus spray head, self-closing valve with handle and 6 foot (2m) reinforced PVC hose.

**Discharge Time:** Eyewash delivers .7 GPM (2.6L/min) for 15 minutes. Drench hose delivers 1.7 GPM (6.4L/min) for 6 minutes. Discharge time is less if eyewash and drench hose are used simultaneously.

**Weight:** 53 lbs. (24kg) empty, 134 lbs. (60.8kg) filled.

**Sign:** Furnished with ANSI-compliant sign.



**Quality Assurance:** Unit is assembled and factory tested prior to shipment.

**Maintenance:** Unit must be inspected regularly. Refill unit after testing or use. Water and bacteriostatic additive must be changed at least once every six months.

**Shipping Note:** Due to the size of the components, this unit is shipped in two cartons.

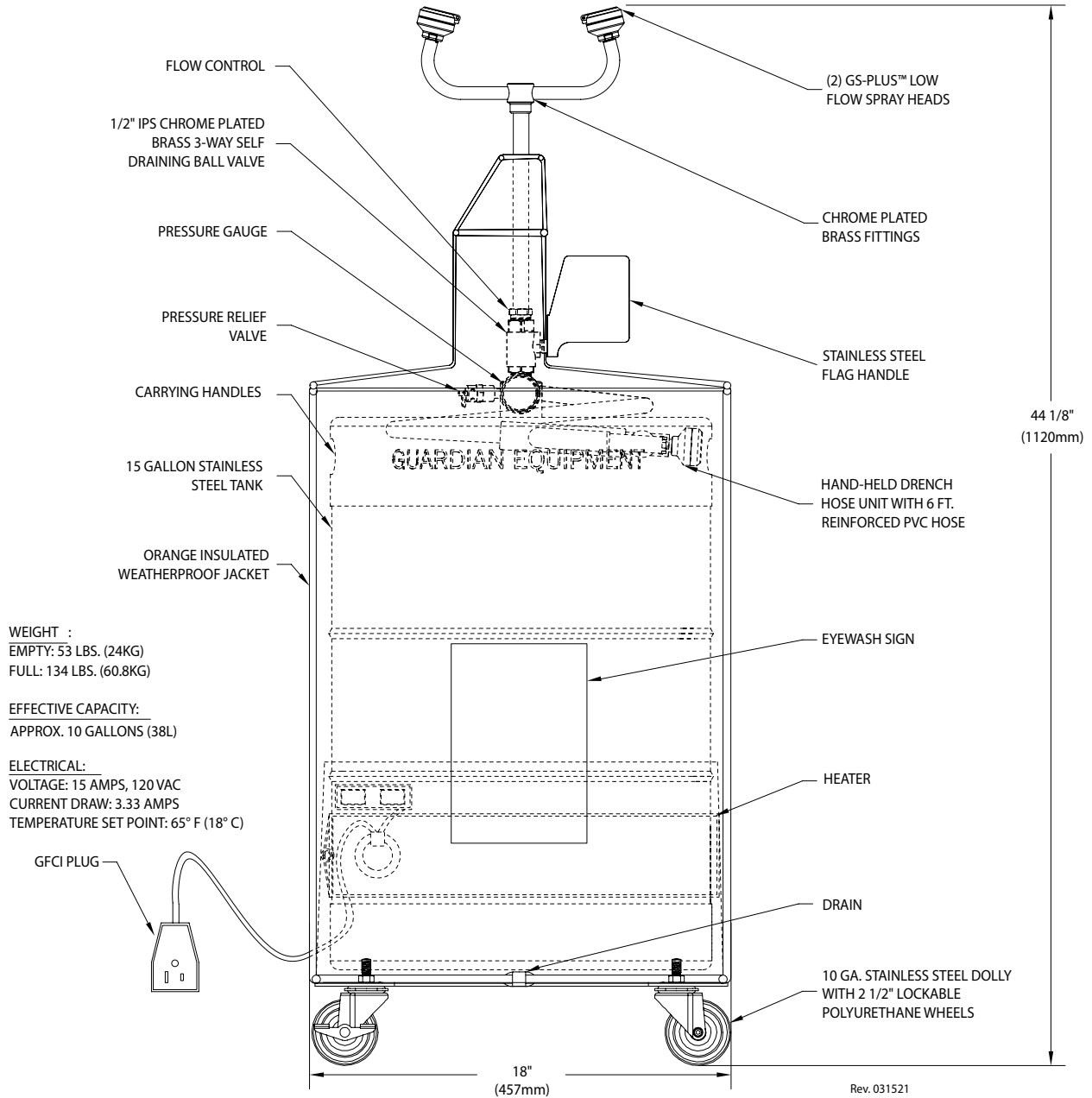
#### Available Options

**G1540BA-R** Case of (4) replacement bottles of bacteriostatic additive.

**AP250-100** Dolly only.



### **G1562HTR-DOL** Portable Eyewash/Drench Hose Unit, 15 Gallon, Heated, with Dolly



THIS SPACE FOR ARCHITECT/ENGINEER APPROVAL

Sign Included



Due to continuing product improvement, the information contained in this document is subject to change without notice. All dimensions are ± 1/4" (6mm). rev. 031521





### **G1562HTR-HAT** Portable Eyewash/Drench Hose Unit, 15 Gallon, Heated, with Hand Truck

**Application:** ANSI Z358.1-2014 “Emergency Eyewash and Shower Equipment” requires that the water delivered by an emergency eyewash be “tepid”, which is defined as between 60° and 100° F (15.5°- 37.8° C). The G1562HTR-HAT portable eyewash/drench hose unit is electrically heated and insulated, making it ideal for use in areas where ambient temperatures may drop below the tepid range. In extreme conditions, the heating system will also protect the unit against freezing.

The G1562HTR-HAT heated portable eyewash/drench hose unit uses air pressure to deliver 10 gallons (37.5L) of water for 15 minutes. For use in low hazard areas where a continuous supply of water is not available.

**Installation:** Unit can be placed in any area where hazards are present. To prepare unit for use, fill with 10 gallons (37.5L) of clean potable water and add bacteriostatic additive (supplied with unit). Bacteriostatic additive protects against growth of bacteria, fungus, algae and acanthamoeba. After filling, pressurize with 80 PSI (5.5 bar) air pressure.

**Hand Truck:** Unit is mounted on two-wheel hand truck for ease of installation and movement. Hand truck has painted steel frame with handles and (2) rubber wheels. Unit is secured to truck with rubber straps.

**Heating System:** Silicone drum heater is attached to outside of tank. Thermostat set to 65° F (18.3° C) senses the temperature of the water inside the tank to turn the heater on and off. Heater requires 15 amp, 120 volt power supply. Total amp draw is 3.33 amps. Furnished with 9 ft. cord with ground fault circuit interrupter (GFCI) plug and manual reset.

**Exterior Jacket:** High visibility orange insulated nylon jacket contains heat to maintain water temperature and protects unit against freezing. Jacket is waterproof and resistant to mildew.

**Tank:** 15 gallon (56L) stainless steel tank. Tank has built-in carrying handles, air intake valve, pressure gauge and pressure relief valve.

**Eyewash:** Use to wash user’s eyes for 15 minutes. Furnished with (2) GS-Plus low flow spray heads with “flip top” dust covers, integral flow controls and filters. Valve is ½” IPS chrome plated brass self-draining ball valve with flag handle. User’s hands are free while eyewash is in operation. Self-draining valve allows water to drain out from spray heads after use.

**Drench Hose:** For rinsing any part of the user’s eyes, face or body. Furnished with single GS-Plus spray head, self-closing valve with handle and 6 foot (2m) reinforced PVC hose

**Discharge Time:** Eyewash delivers .7 GPM (2.6L/min) for 15 minutes. Drench hose delivers 1.7 GPM (6.4L/min) for 6 minutes. Discharge time is less if eyewash and drench hose are used simultaneously.



**Weight:** 82 lbs. (37.2kg) empty, 163 lbs. (73.9kg) filled.

**Sign:** Furnished with ANSI-compliant sign.

**Quality Assurance:** Unit is assembled and factory tested prior to shipment.

**Maintenance:** Unit must be inspected regularly. Refill unit after testing or use. Water and bacteriostatic additive must be changed at least once every six months.

**Shipping Note:** Due to the size of the components, this unit is shipped in two cartons.

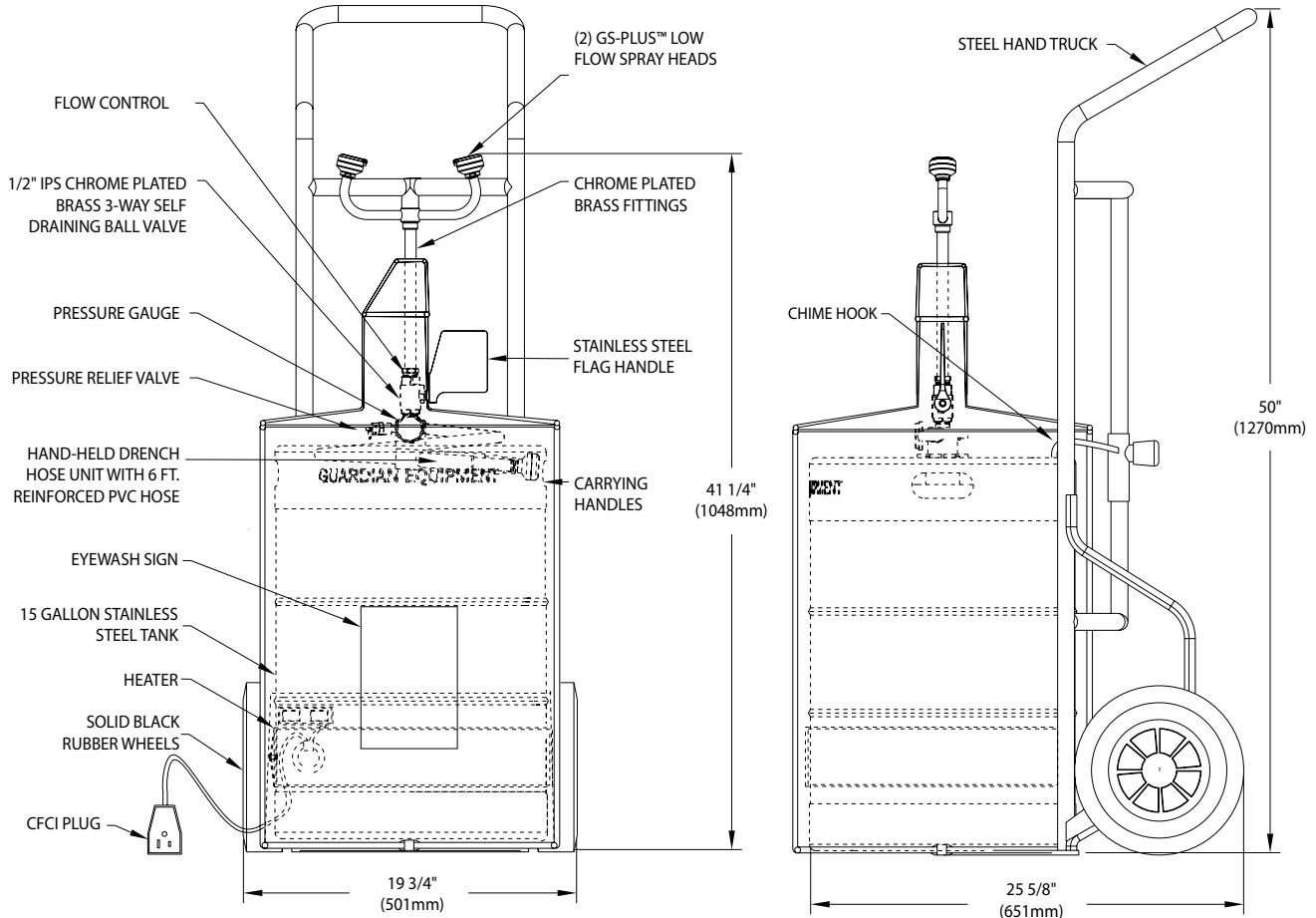
#### Available Options

**G1540BA-R** Case of (4) replacement bottles of bacteriostatic additive.

**AP200-013** Hand truck only.



### **G1562HTR-HAT** Portable Eyewash/Drench Hose Unit, 15 Gallon, Heated, with Hand Truck



**WEIGHT:**  
 EMPTY: 82 LBS. (37.2KG)  
 FULL: 163 LBS. (73.9KG)

**EFFECTIVE CAPACITY:**  
 APPROX. 10 GALLONS (38 L)

**ELECTRICAL:**  
 POWER: 15 AMPS, 120 VAC  
 CURRENT DRAW: 3.33 AMPS  
 TEMPERATURE SET POINT: 65° F (18° C)

Rev. 031521

THIS SPACE FOR ARCHITECT/ENGINEER APPROVAL

Sign Included



Due to continuing product improvement, the information contained in this document is subject to change without notice. All dimensions are ± 1/4" (6mm). rev. 031521

Guardian Equipment 312 447 8100 TELEPHONE  
 1140 N North Branch St 312 447 8101 FACSIMILE  
 Chicago, IL 60642 gesafety.com

Listed 8116. Units have been tested to and comply with ANSI Z358.1-2014 and the Uniform Plumbing Code.

