

☐ **GBF2470** Recessed Safety Station with Drain Pan and Wall Mounted Exposed Shower Head, Cleanroom Construction

Application: Recessed barrier-free eye/face wash and shower safety station for use in cleanrooms. Unit is constructed in Type 304 stainless steel and meets cleanroom requirements, making it ideal for use in semiconductor, electronics and pharmaceutical applications. Unit has wall mounted exposed shower head and drain pan. Stainless steel cover provides attractive appearance and protects unit when not in use. When activated, cover serves as pan to collect waste water and return it into unit for drainage.

Cleanroom Construction: Unit is completely sealed and airtight. Covers conceal all openings on front of unit. Supply nipples on inlet and outlet of shower valve are sealed with grommets. All seams in cabinet are fully welded and polished.

ADA Compliance: When installed at recommended mounting heights, unit complies with ADA requirements for accessibility by handicapped persons.

Shower Head: 10" diameter stainless steel with 20 GPM flow control. Furnished with horizontal supply pipe and wall escutcheon.

Shower Valve: 1" IPS brass stay-open ball valve with stainless steel "panic bar" actuator.

Cover/Drain Pan: 16 gauge stainless steel combination cover and drain pan. Grasping "panic bar" handle and opening cover pulls spray head assembly down from vertical to horizontal position, activating water flow. While unit is in operation, waste water is collected in drain pan and returned into the unit. Unit remains in operation until cover is returned to closed position.

Eye/Face Wash Spray Head Assembly: Two FS-Plus™ spray heads mounted on supply arms. Each spray head has individually adjustable flow control and filter to remove impurities from water flow.

Eye/Face Wash Valve: 1/2" IPS brass plug-type valve with O-ring seals. Furnished with in-line strainer to protect valve from debris and foreign matter.

Mounting: Type 304 stainless steel cabinet with flange featuring 3/8" return for recessed mounting in wall. Unit fits in standard 3-5/8" deep wall.

Pipe and Fittings: Exposed pipe and escutcheon are brushed stainless steel.

Supply: 1" NPT male inlet.

Waste: 2" NPT male outlet.

Sign: ANSI-compliant identification sign.

Quality Assurance: Unit is completely assembled and water tested prior to shipment.

U.S. Patent 5,768,721



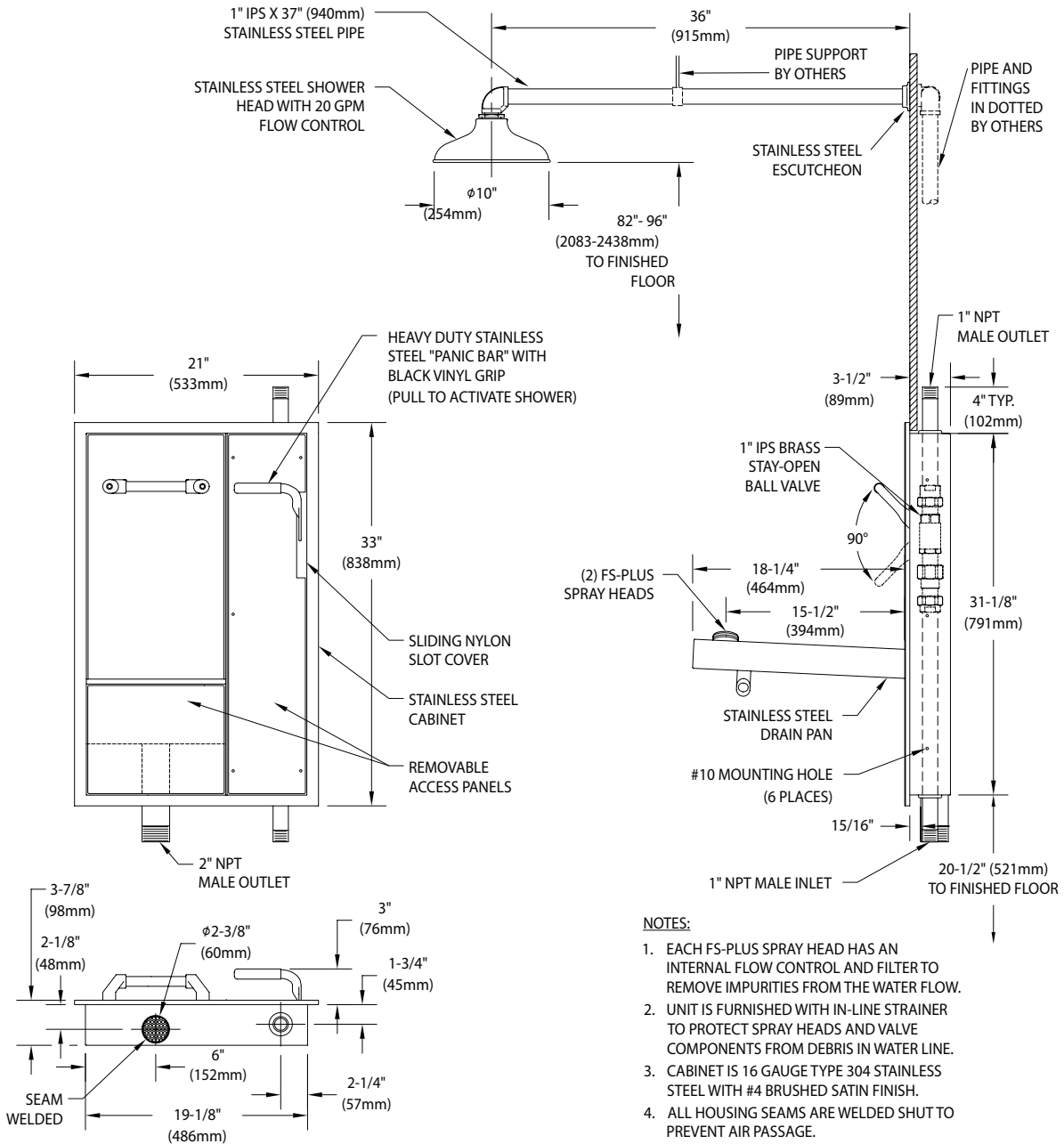
Note: Shown with optional AP280-235 electric light and alarm horn unit (sold separately).

Available Options

- ☐ **G6040** Thermostatic Mixing Valve
- ☐ **AP250-018SS** Brushed stainless steel support brace for wall mounted showers. Brace mounts above or below shower.
- ☐ **AP250-065** Modesty Curtain
- ☐ **AP280-235** Electric Light and Alarm Horn
- ☐ **AP280-237** Electric Light and Alarm Horn with Silencing Switch



GBF2470 Recessed Safety Station with Drain Pan and Wall Mounted Exposed Shower Head, Cleanroom Construction



THIS SPACE FOR ARCHITECT/ENGINEER APPROVAL

Sign Included



Due to continuing product improvement, the information contained in this document is subject to change without notice. All dimensions are $\pm 1/4"$ (6mm). rev. 112322

