



### ○ **GBF2352** Recessed Safety Station with Exposed Shower Head, Drain Pan and Daylight Drain, Fire-Rated Construction

**APPLICATION:** Recessed barrier-free eye/face wash and shower safety station for use in 1- and 2-hour fire-rated walls. Unit has ceiling mounted exposed shower head and drain pan. Stainless steel cover provides attractive appearance and protects unit when not in use. When activated, cover serves as pan to collect waste water and return it into unit for drainage. Rather than connecting to building drainage system, unit has 1 1/2" OD drain connection on front of unit for waste water. Front drain provides for less costly installation while facilitating regular testing of unit.

**FIRE RESISTANCE:** Unit can be used in 1- and 2-hour fire-rated walls without compromising integrity of wall. Unit has endothermic ceramic fiber blanket around cabinet and is sealed with fire barrier caulk. Unit is UL-listed as "Through-Penetration Firestop System No. W-L-7167." Use fire barrier caulk when installing unit.

**ADA COMPLIANCE:** When installed at recommended mounting heights, unit complies with ADA requirements for accessibility by handicapped persons.

**SHOWER HEAD:** 10" diameter stainless steel.

**SHOWER VALVE:** 1" IPS brass stay-open ball valve with stainless steel "panic bar" actuator.

**COVER/DRAIN PAN:** 16 gauge stainless steel combination cover and drain pan. Grasping "panic bar" handle and opening cover pulls spray head assembly down from vertical to horizontal position, activating water flow. While unit is in operation, waste water is collected in drain pan and returned into cabinet for drainage. Unit remains in operation until cover is returned to closed position.

**EYE/FACE WASH SPRAY HEAD ASSEMBLY:** Two FS-Plus™ spray heads mounted on supply arms. Each spray head has individually adjustable flow control and filter to remove impurities from water.

**EYE/FACE WASH VALVE:** 1/2" IPS brass plug-type valve with O-ring seals. Furnished with in-line strainer to protect valve from debris and foreign matter.

**MOUNTING:** 16 gauge stainless steel cabinet with flanged rim for recessed mounting in wall.

**PIPE AND FITTINGS:** Exposed pipe and escutcheon are brushed stainless steel.

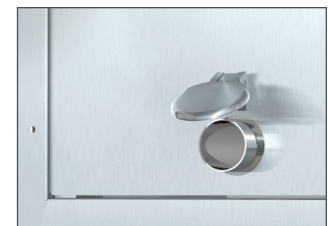
**SUPPLY:** 1" NPT female inlet.

**WASTE:** 1 1/2" OD tailpiece on front of unit with hinged stainless steel cover.

**SIGN:** Furnished with ANSI-compliant identification sign.

**QUALITY ASSURANCE:** Unit is completely assembled and water tested prior to shipment.

**U.S. PATENT 5,768,721**



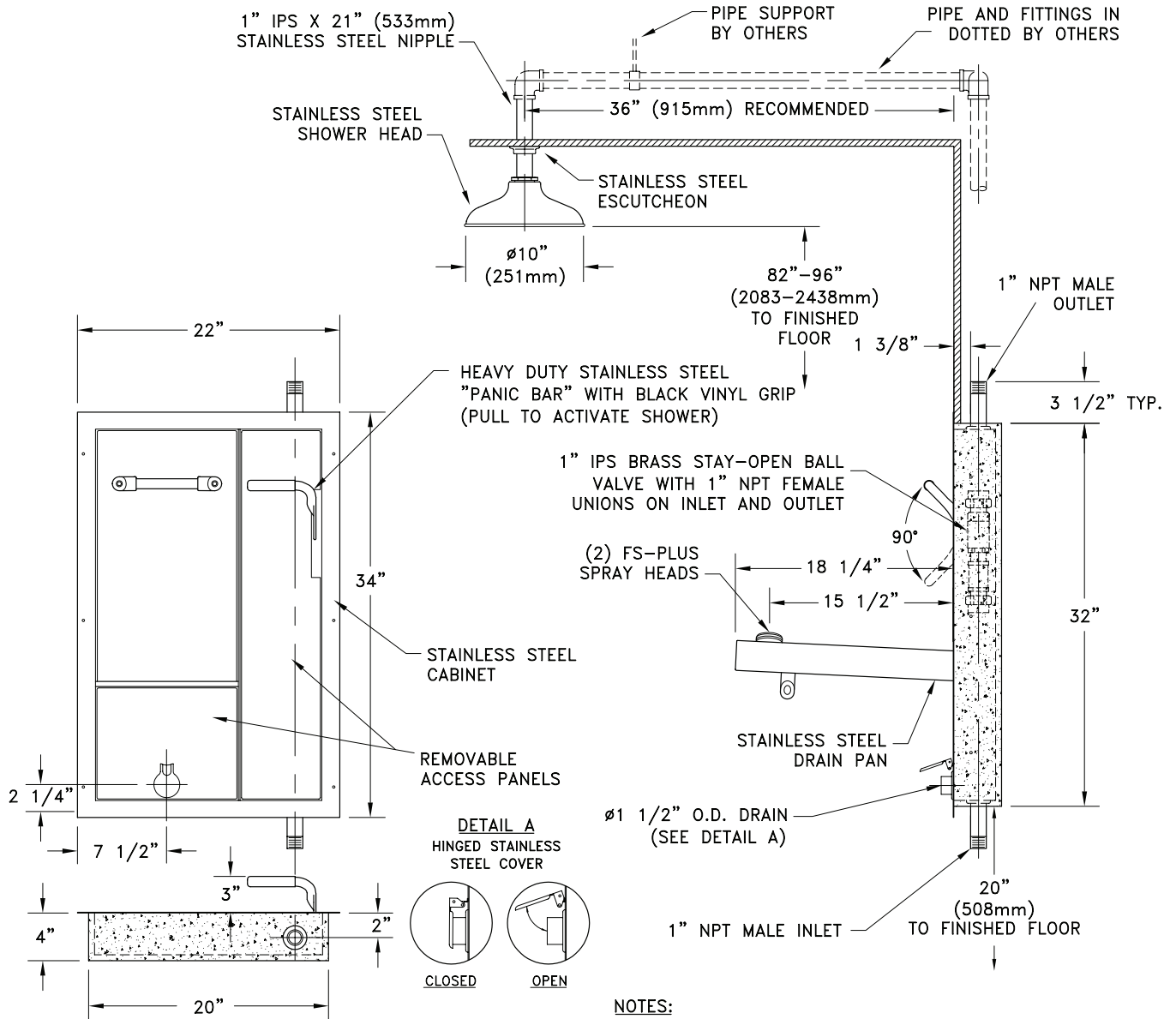
### Available Options

- **PCC** All-polished chrome plated brass construction
- **AP250-064 TEST KIT**
- **AP250-065 MODESTY CURTAIN**
- **AP280-235 ELECTRIC LIGHT AND ALARM HORN**
- **TMV** G3800 Thermostatic Mixing Valve.





### GBF2352 Recessed Safety Station with Exposed Shower Head, Drain Pan and Daylight Drain, Fire-Rated Construction



#### NOTES:

1. UNIT IS FURNISHED WITH IN-LINE STRAINER TO PROTECT VALVE AND SPRAY HEADS FROM DEBRIS IN WATER LINE.
2. UNIT ENCAPSULATED ON FIVE SIDES WITH ENDOTHERMIC MATERIAL FOR USE IN PENETRATION FIRESTOP SYSTEMS. SEE UL FIRE RESISTANCE DIRECTORY <3KFH>
3. U.S. PATENT NO. 5,768,721.



CABINETS FOR USE IN PENETRATION FIRESTOP SYSTEMS. SEE UL FIRE RESISTANCE DIRECTORY <3KFH>.

THIS SPACE FOR ARCHITECT/ENGINEER APPROVAL

Due to continuing product improvement, the information contained in this document is subject to change without notice. All dimensions are ± 1/4" (6mm). rev. 0112

Sign Included



ETL Listed 101496. Units have been tested to and comply with ANSI Z358.1-2009

