

### **GBF2273** Barrier-Free Safety Station with Drain Pan, Daylight Drain and Thermostatic Mixing Valve, Surface Mounted

**Application:** Barrier-free eye/face wash and shower safety station for surface mounting. Unit is ideal for use on concrete masonry unit (CMU) and other walls that cannot be penetrated. Unit has exposed shower head and swing-down eye/face wash with drain pan. Stainless steel cover provides attractive appearance and protects unit when not in use. When activated, cover serves as pan to collect waste water and return it into unit for drainage. Rather than connecting to building drainage system, unit has 1" IPS stainless steel drain on front of unit for waste water. Front drain eliminates need for connection to drainage system while facilitating regular testing of unit.

**ADA Compliance:** When installed at recommended mounting heights, unit complies with ADA requirements for accessibility by handicapped persons.

**Mixing Valve:** ASSE 1071 emergency thermostatic mixing valve, 50-gallon capacity. See G6040 for more information.

**Shower Head:** 10" diameter stainless steel with 20 GPM flow control.

**Shower Valve:** 1" IPS brass stay-open ball valve with stainless steel "panic bar" actuator.

**Cover/Drain Pan:** 16 gauge stainless steel combination cover and drain pan. Grasping "panic bar" handle and opening cover pulls spray head assembly down from vertical to horizontal position, activating water flow. While unit is in operation, waste water is collected in drain pan and re-directed to daylight drain for drainage out the front of unit. Unit remains in operation until cover is returned to closed position.

**Eye/Face Wash Spray Head Assembly:** Two FS-Plus™ spray heads mounted on supply arms. Each spray head has individually adjustable flow control and filter to remove impurities from water flow.

**Eye/Face Wash Valve:** 1/2" IPS brass plug-type valve with O-ring seals. Furnished with in-line strainer to protect valve from debris and foreign matter.

**Mounting:** Unit is comprised of (2) modular 16 gauge stainless steel cabinets for surface mounting on wall.

**Pipe and Fittings:** Exposed pipe and fittings are brushed stainless steel. Internal piping between mixing valve outlet and safety station inlet is copper tubing with pro press fittings (supplied by factory).

**Supply:** 1" NPT female inlet.

**Waste:** 1" IPS stainless steel drain elbow on front of unit.

**Sign:** ANSI-compliant identification sign.

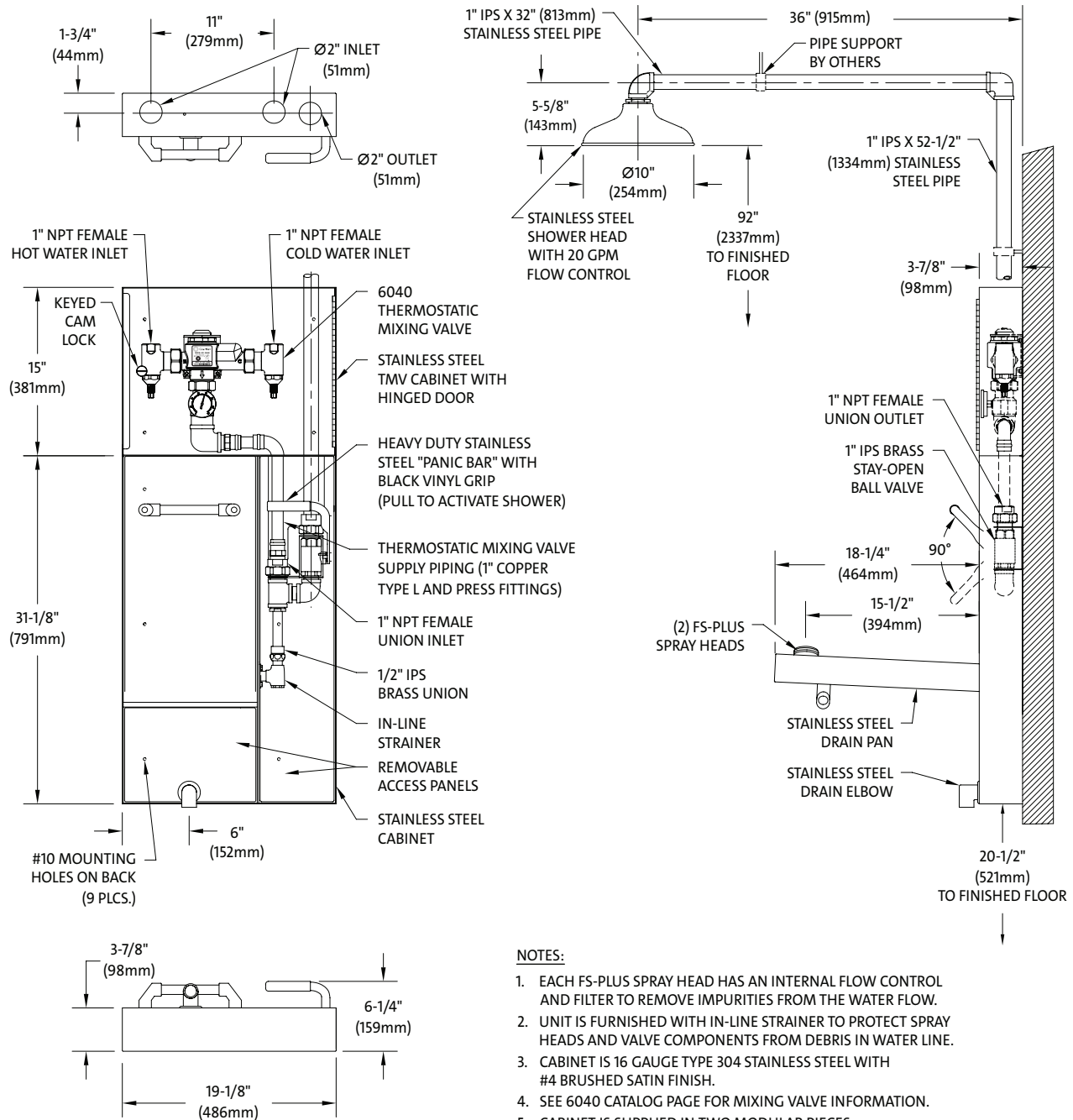


#### Available Options

- ☐ **PCC** Polished chrome plated brass shower supply nipple.
- ☐ **AP250-018SS** Brushed stainless steel support brace for wall mounted showers. Brace mounts above or below shower.
- ☐ **AP250-065** Modesty Curtain.
- ☐ **AP280-240** Electric Light and Alarm Horn.
- ☐ **AP280-247** Surface mounted alarm w/ silencing switch option.



### GBF2273 Barrier-Free Safety Station with Drain Pan, Daylight Drain and Thermostatic Mixing Valve, Surface Mounted



#### NOTES:

1. EACH FS-PLUS SPRAY HEAD HAS AN INTERNAL FLOW CONTROL AND FILTER TO REMOVE IMPURITIES FROM THE WATER FLOW.
2. UNIT IS FURNISHED WITH IN-LINE STRAINER TO PROTECT SPRAY HEADS AND VALVE COMPONENTS FROM DEBRIS IN WATER LINE.
3. CABINET IS 16 GAUGE TYPE 304 STAINLESS STEEL WITH #4 BRUSHED SATIN FINISH.
4. SEE 6040 CATALOG PAGE FOR MIXING VALVE INFORMATION.
5. CABINET IS SUPPLIED IN TWO MODULAR PIECES  
TEST ALL EMERGENCY EQUIPMENT AT LEAST WEEKLY.

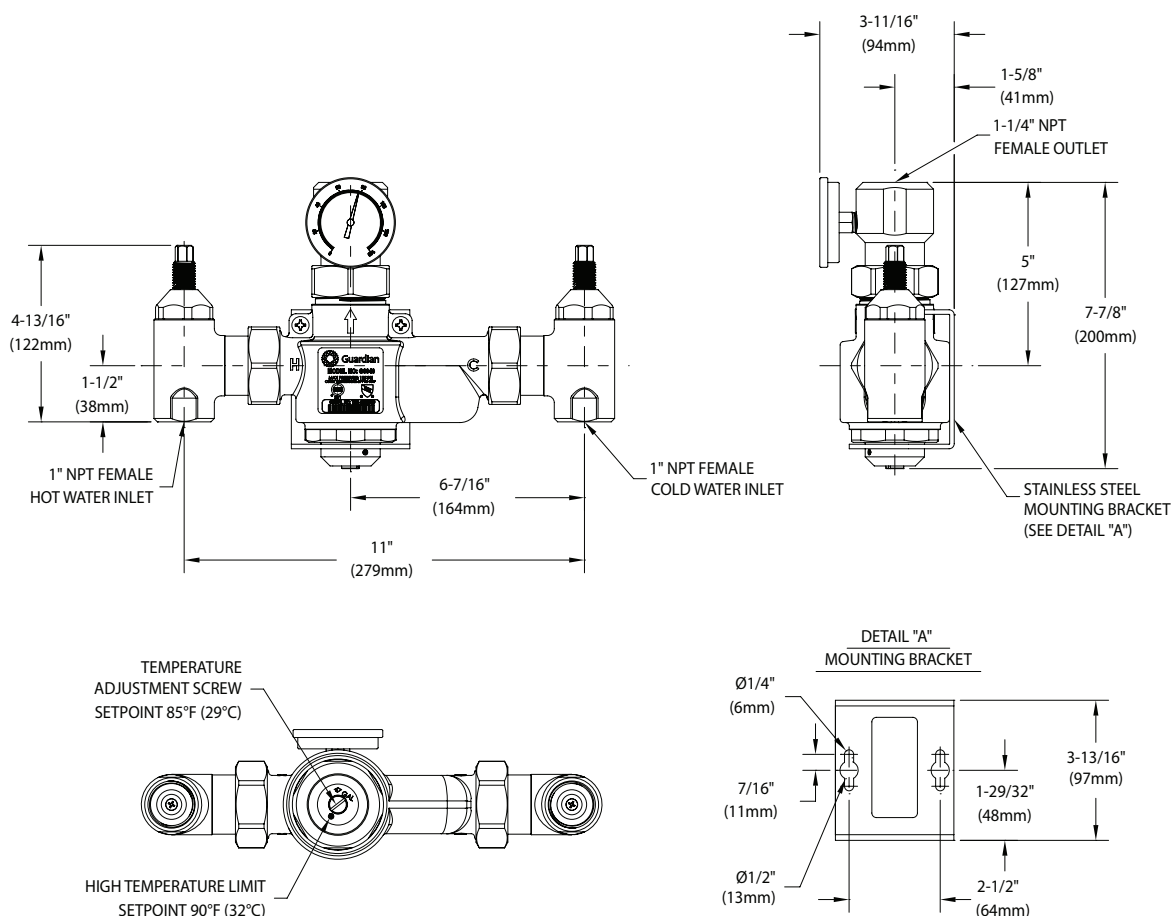
THIS SPACE FOR ARCHITECT/ENGINEER APPROVAL

Due to continuing product improvement, the information contained in this document is subject to change without notice. All dimensions are  $\pm 1/4"$  (6mm). rev. 110422

Sign Included



### **G6040** Thermostatic Mixing Valve, 50 Gallon/189 Liter Capacity



#### Notes:

1. ANSI Z358.1-2014 states that the water temperature delivered by emergency equipment should be "tepid". Tepid is defined as 60°F - 100°F (16°C - 38°C). However, in circumstances where a chemical reaction can be accelerated by water temperature, a medical professional should be consulted to determine the optimum water temperature for the application.
2. For thermostatic mixing valves to deliver the required water temperature and volume, the system must be sized correctly. Please refer to the flow capacity, pressure and temperature requirements herein when designing the tepid water system.
3. Valve is factory set to deliver 85°F (29°C) tepid water. Depending on pressure and temperature of the incoming water supplies, this setting may require adjustment in the field. The adjustment screw is locked in position after adjusting.
4. Thermostatic mixing valves, like all emergency equipment, must be installed in accordance with the manufacturer's instructions and maintained on a regular basis. Per ANSI Z358.1-2014, all emergency equipment should be activated weekly and inspected at least annually. Thermostatic mixing valves should be treated the same.
5. Per ANSI Z358.1-2014, plumbed emergency equipment must be connected to a potable water supply. This valve meets the requirements of the U.S. Safe Drinking Water Act as lead-free and is safe for use with potable water.
6. This valve is supplied with shutoff valves. Per ANSI Z358.1-2014, if shutoff valves are installed on the water supply to emergency equipment, the valves must be lockable to prevent unauthorized shutoff. Accordingly, each shutoff valve stem on this valve has a hole for installing a lock to secure the stem in the open position.

THIS SPACE FOR ARCHITECT/ENGINEER APPROVAL

Due to continuing product improvement, the information contained in this document is subject to change without notice. All dimensions are  $\pm 1/4"$  (6mm). rev. 022420