

□ **GBF1740DP** Swing Down Eye/Face Wash with Drain Pan, Recess Mounted, Fire-rated Construction

Application: Recessed barrier-free swing-down eye/face wash for use in 1- and 2-hour fire-rated walls. Stainless steel cover provides attractive appearance and protects unit when not in use. When activated, cover serves as pan to collect waste water and return it into unit for drainage.

Fire Resistance: Unit can be used in 1- and 2-hour fire-rated walls without compromising integrity of wall. Unit has endothermic ceramic fiber blanket around cabinet and is sealed with fire barrier caulk. Unit is UL-listed as “Through-Penetration Firestop System No. W-L-7167.” Use fire barrier caulk when installing unit.

ADA Compliance: When installed at recommended mounting height, unit complies with ADA requirements for accessibility by handicapped persons.

Spray Head Assembly: Two FS-Plus™ spray heads mounted on supply arms. Each spray head has individually adjustable flow control and filter to remove impurities from water flow.

Cover/Drain Pan: 16 gauge stainless steel combination cover and drain pan. Grasping “panic bar” handle and opening cover pulls spray head assembly down from vertical to horizontal position, activating water flow. While unit is in operation, waste water is collected in drain pan and returned into cabinet for drainage. Unit remains in operation until cover is returned to closed position.

Valve: 1/2" IPS brass plug-type valve with O-ring seals. Furnished with in-line strainer to protect valve and spray heads from debris and foreign matter.

Mounting: 16 gauge stainless steel cabinet with flange featuring 3/8" return for recessed mounting in wall.

Supply: 1/2" NPT female inlet.

Waste: 2" NPT female outlet.

Sign: ANSI-compliant identification sign.

Quality Assurance: Unit is completely assembled and water tested prior to shipment.

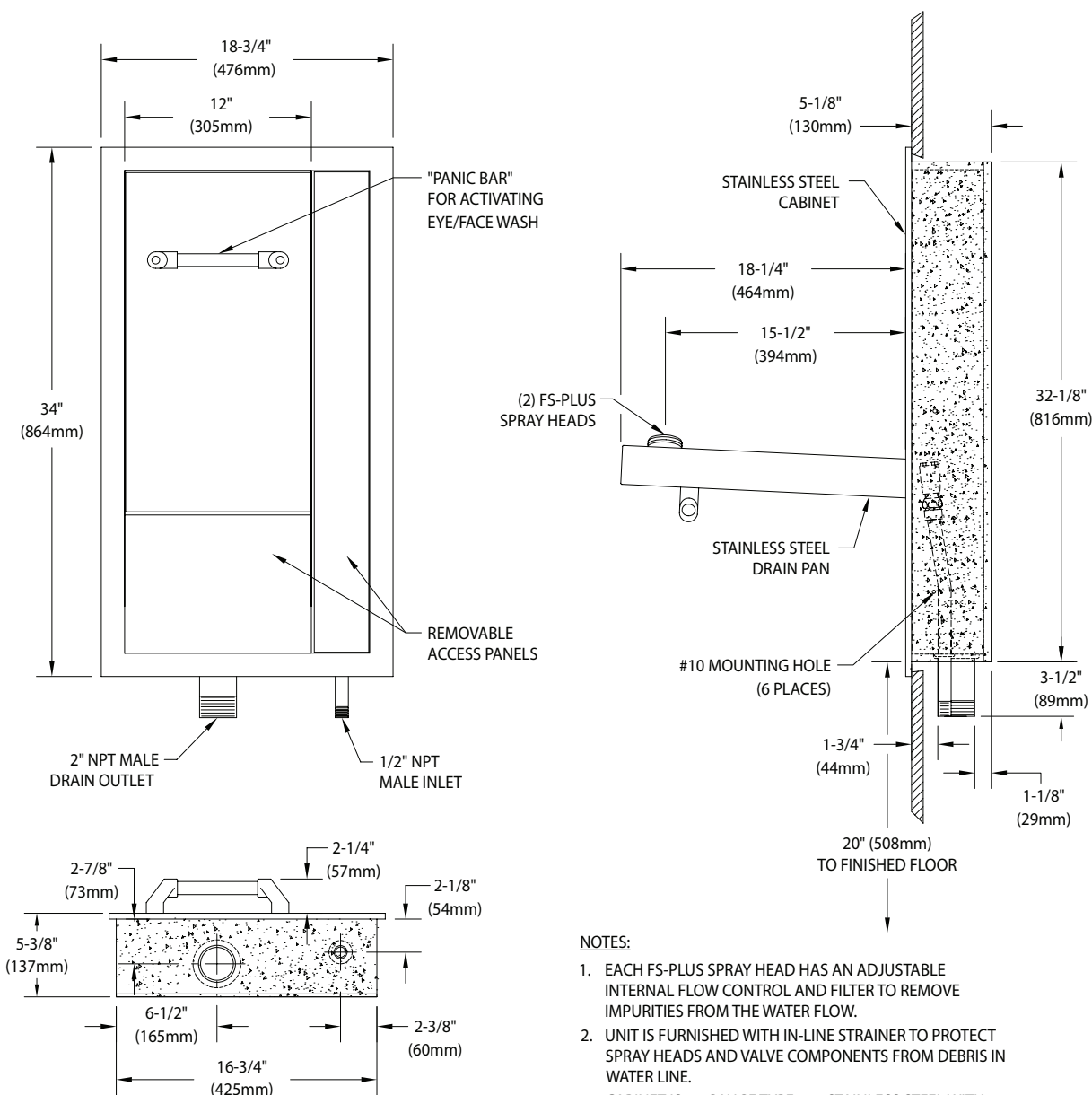
Available Options

- **G6020** Thermostatic mixing valve precisely blends hot and cold water to deliver tepid water as required by ANSI Z358.1-2014. Refer to “Thermostatic Mixing Valves” section for complete technical and product selection information.
- **AP285-235** Electric Light and Alarm Horn.
- **AP285-237** Electric Light and Alarm Horn with Silencing Switch.



Note: Shown with optional AP285-235 electric light and alarm horn unit (sold separately).

 GBF1740DP Swing Down Eye/Face Wash with Drain Pan, Recess Mounted, Fire-rated Construction



NOTES:

1. EACH FS-PLUS SPRAY HEAD HAS AN ADJUSTABLE INTERNAL FLOW CONTROL AND FILTER TO REMOVE IMPURITIES FROM THE WATER FLOW.
2. UNIT IS FURNISHED WITH IN-LINE STRAINER TO PROTECT SPRAY HEADS AND VALVE COMPONENTS FROM DEBRIS IN WATER LINE.
3. CABINET IS 16 GAUGE TYPE 304 STAINLESS STEEL WITH #4 BRUSHED SATIN FINISH.
4. UNIT ENCAPSULATED ON FIVE SIDES WITH ENDOTHERMIC MATERIAL FOR USE IN PENETRATION FIRESTOP SYSTEMS.
5. BACK EDGE OF CABINET IS COVERED WITH AN INTUMESCENT STRIP.



CABINETS FOR USE IN PENETRATION
FIRESTOP SYSTEMS. SEE UL FIRE
RESISTANCE DIRECTORY <3KFH>.

THIS SPACE FOR ARCHITECT/ENGINEER APPROVAL

Sign Included



Due to continuing product improvement, the information contained in this document is subject to change without notice. All dimensions are $\pm 1/4"$ (6mm). rev. 062923

Guardian Equipment
1140 N North Branch St
Chicago, IL 60642

312 447 8100 TELEPHONE
312 447 8101 FACSIMILE
gesafety.com



Listed 8116. Units have been tested to and comply with ANSI Z358.1-2014 and the Uniform Plumbing Code.

