

○ **GBF1670** Recessed Emergency Shower, Exposed Shower Head

APPLICATION: Recessed emergency shower with ceiling mounted exposed shower head. Recessed shower conserves valuable floor space, while eliminating the clutter and obstruction created by conventional shower equipment. Unit can be installed in either a corridor or a lab room, close to where accidents might occur.

ADA COMPLIANCE: When installed at recommended mounting heights, unit complies with ADA requirements for accessibility by handicapped persons.

SHOWER HEAD: 10" diameter stainless steel. Furnished with vertical supply pipe and ceiling escutcheon for mounting shower head at desired height below finished ceiling.

VALVE: 1" IPS brass stay-open ball valve with stainless steel "panic bar." Pulling bar down activates shower; shower remains in operation until bar is returned to original closed position. Furnished with stainless steel access panel and 1" IPS unions for valve.

PIPE AND FITTINGS: Exposed pipe and escutcheon are brushed stainless steel.

SUPPLY: 1" NPT female inlet.

SIGN: ANSI-compliant identification sign.

U.S. PATENT 5,768,721

Available Options

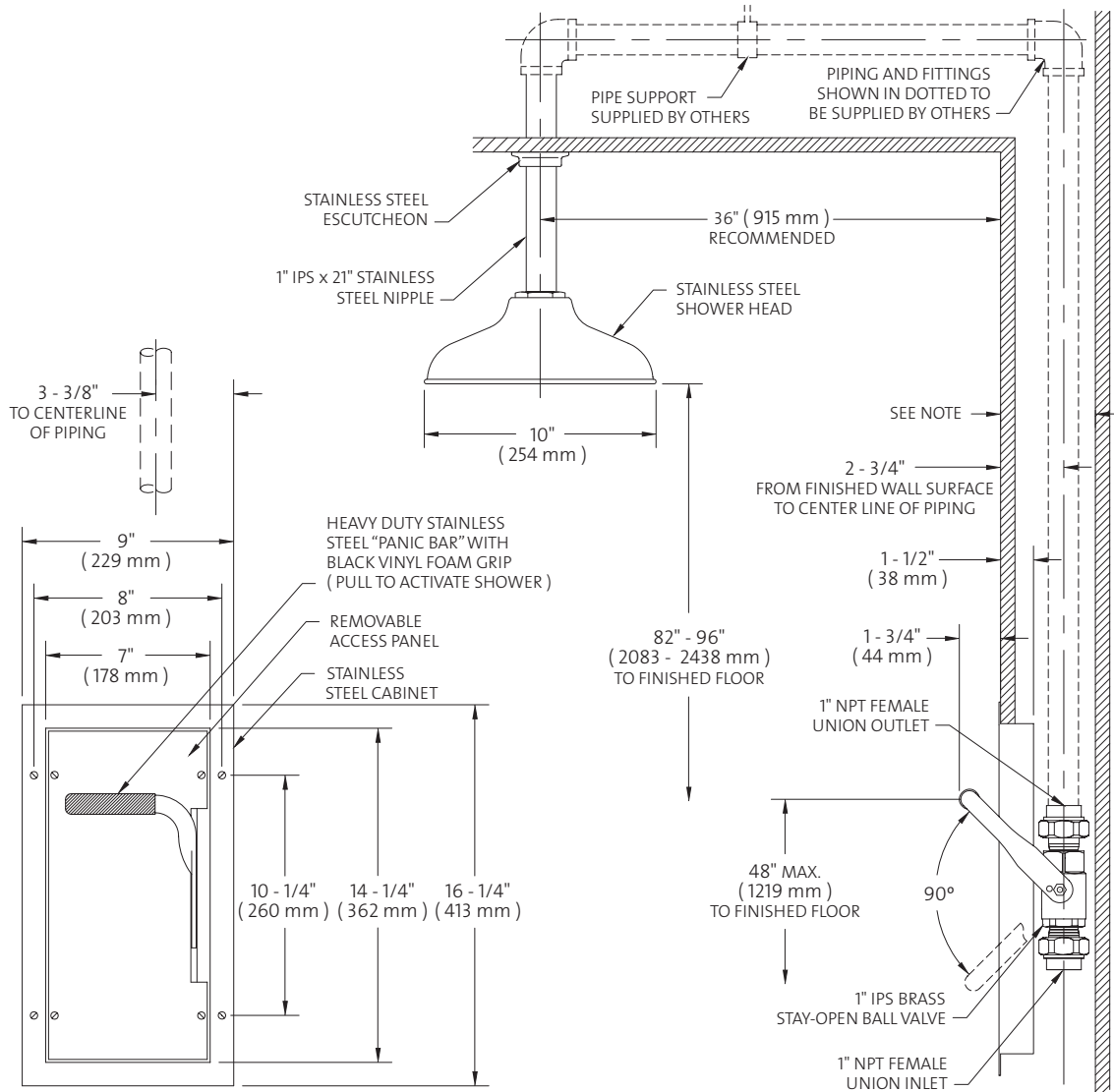
- **FC20** Regulates shower flow rate to 20 GPM.
- **AP250-065 MODESTY CURTAIN**
Modesty curtain for wall mounting.
- **AP280-235 ELECTRIC LIGHT AND ALARM HORN**
Flashing light/alarm horn unit is recess mounted in finished wall. Light is illuminated and horn sounds when shower is activated. Includes additional leads for remote monitoring.
- **TMV G3800** thermostatic mixing valve precisely blends hot and cold water to deliver tepid water as required by ANSI Z358.1-2009.



Note: Shown with optional AP280-235 electric light and alarm horn unit (sold separately).



GBF1670 Recessed Emergency Shower, Exposed Shower Head



NOTES:

1. A MINIMUM OF 4 - 1/8" (105 mm) IS REQUIRED FROM FINISHED WALL SURFACE TO REAR OF WALL CAVITY TO ACCOMMODATE UNIT.
2. U.S. PATENT NO. 5,768,721.

THIS SPACE FOR ARCHITECT/ENGINEER APPROVAL

Due to continuing product improvement, the information contained in this document is subject to change without notice. All dimensions are $\pm 1/4"$ (6mm). rev. 1209

Sign Included

