



G1994HFC Safety Station with WideArea™ Eye/Face Wash, Hand and Foot Control, All-Stainless Steel

APPLICATION: All-stainless steel combination WideArea™ eye/face wash and shower safety station. Stainless steel construction is ideal for highly corrosive environments and clean room applications. Eye/face wash is activated by flag handle or foot treadle. Four GS-Plus™ spray-type outlet heads deliver a flood of water over a wide area of coverage for complete rinsing of eyes and face.

SHOWER HEAD: 10" diameter stainless steel.

SHOWER VALVE: 1" IPS Type 316 stainless steel stay-open ball valve. Valve has stainless steel ball and Teflon® seals. Furnished with stainless steel actuating arm and 29" stainless steel pull rod.

SPRAY HEAD ASSEMBLY: Four GS-Plus™ spray heads. Each head has a "flip top" dust cover, internal flow control and filter to remove impurities from the water flow.

EYE/FACE WASH BOWL: 11 1/2" diameter stainless steel.

EYE/FACE WASH VALVE: 1/2" IPS Type 316 stainless steel stay-open ball valve. Valve has stainless steel ball and Teflon® seals. Valve is activated by flag handle or foot treadle. Unit remains in operation until handle is returned to closed position.

PIPE AND FITTINGS: Schedule 40 Type 304 brushed stainless steel. Furnished with orange polyethylene covers for vertical piping for high visibility.

SUPPLY: 1 1/4" NPT female top or side inlet.

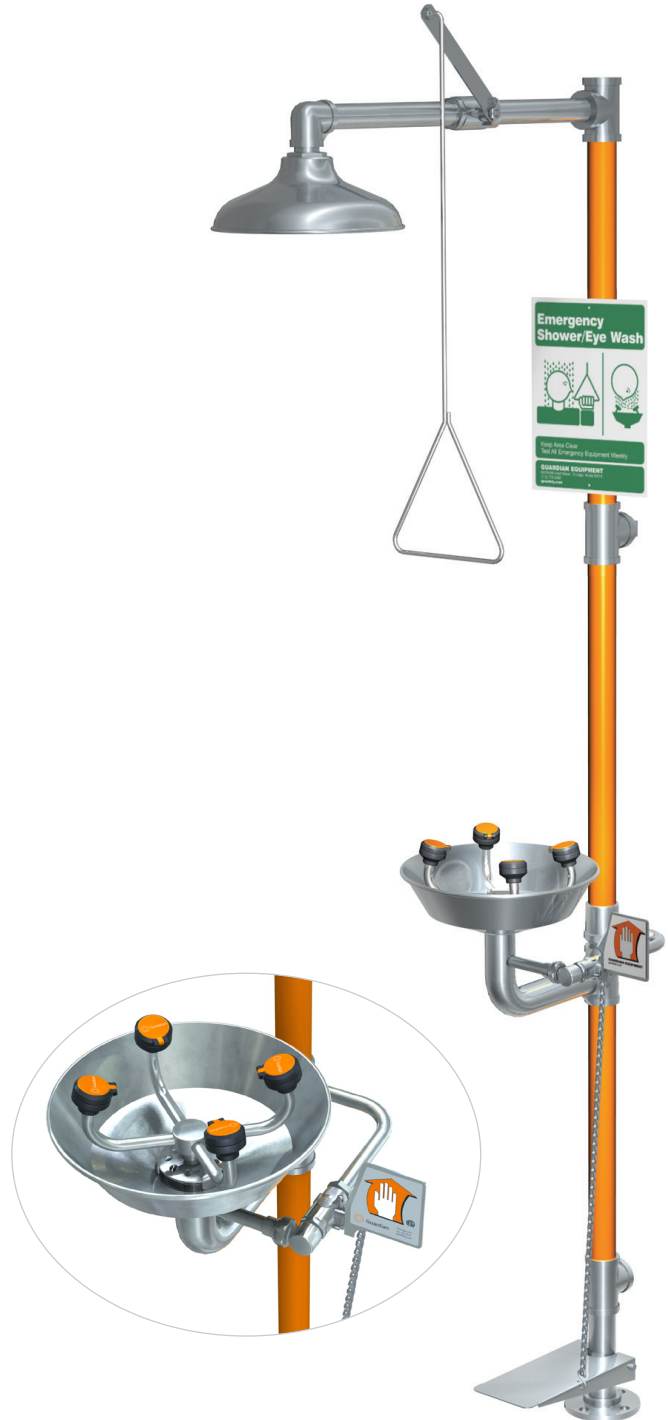
WASTE: 1 1/4" NPT female outlet.

SIGN: Furnished with ANSI-compliant identification sign.

QUALITY ASSURANCE: Valve and spray head assemblies are factory assembled and water tested prior to shipment.

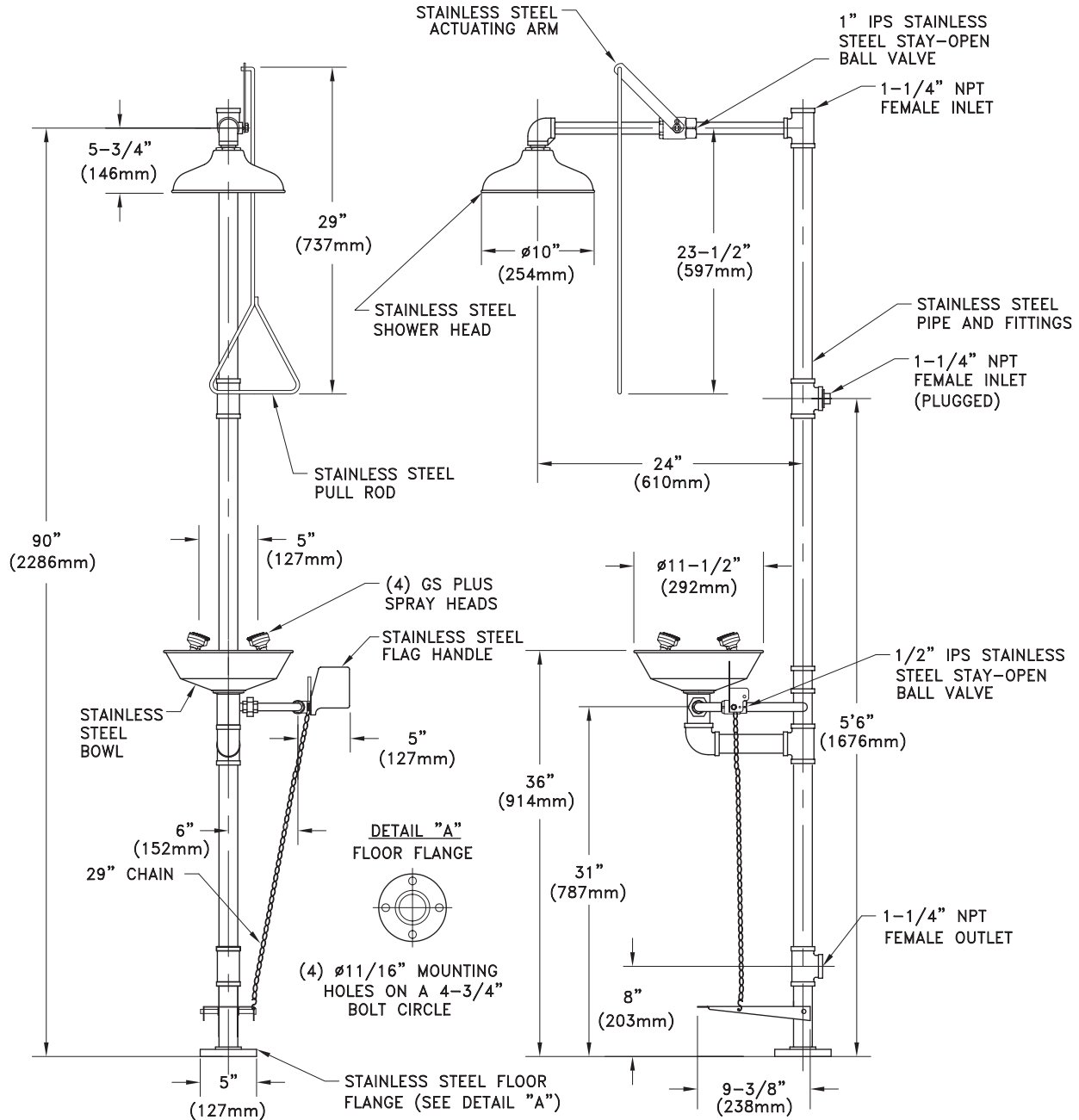
Available Options

- BC** Stainless steel cover for eye/face wash bowl.
- FC20** Regulates shower flow rate to 20 GPM.
- AP275-100 ELECTRIC LIGHT AND ALARM HORN**
Light and alarm horn summon assistance when eye/face wash or shower is activated.
- AP250-015 MODESTY CURTAIN**
Modesty curtain for mounting on safety station.
- TMV** G3800 thermostatic mixing valve precisely blends hot and cold water to deliver warm (tepid) water as required by ANSI Z358.1-2009.





□ G1994HFC Safety Station with WideArea™ Eye/Face Wash, Hand and Foot Control, All-Stainless Steel



THIS SPACE FOR ARCHITECT/ENGINEER APPROVAL

Due to continuing product improvement, the information contained in this document is subject to change without notice. All dimensions are ± 1/4" (6mm). rev. 0112

Sign Included

