



### □ **G1994** Safety Station with WideArea™ Eye/Face Wash, All-Stainless Steel Construction

**APPLICATION:** All-stainless steel combination WideArea™ eye/face wash and shower safety station. Stainless steel construction is ideal for highly corrosive environments and clean room applications. Four GS-Plus™ spray-type outlet heads deliver a flood of water over a wide area of coverage for complete rinsing of eyes and face.

**SHOWER HEAD:** 10" diameter stainless steel.

**SHOWER VALVE:** 1" IPS Type 316 stainless steel stay-open ball valve. Valve has stainless steel ball and Teflon® seals. Furnished with stainless steel actuating arm and 29" stainless steel pull rod.

**SPRAY HEAD ASSEMBLY:** Four GS-Plus™ spray heads. Each head has a "flip top" dust cover, internal flow control and filter to remove impurities from the water flow.

**EYE/FACE WASH BOWL:** 11 1/2" diameter stainless steel.

**EYE/FACE WASH VALVE:** 1/2" IPS Type 316 stainless steel stay-open ball valve. Valve has stainless steel ball and Teflon® seals.

**PIPE AND FITTINGS:** Schedule 40 Type 304 brushed stainless steel. Furnished with orange polyethylene covers for vertical piping for high visibility and corrosion resistance.

**SUPPLY:** 1 1/4" NPT female top or side inlet.

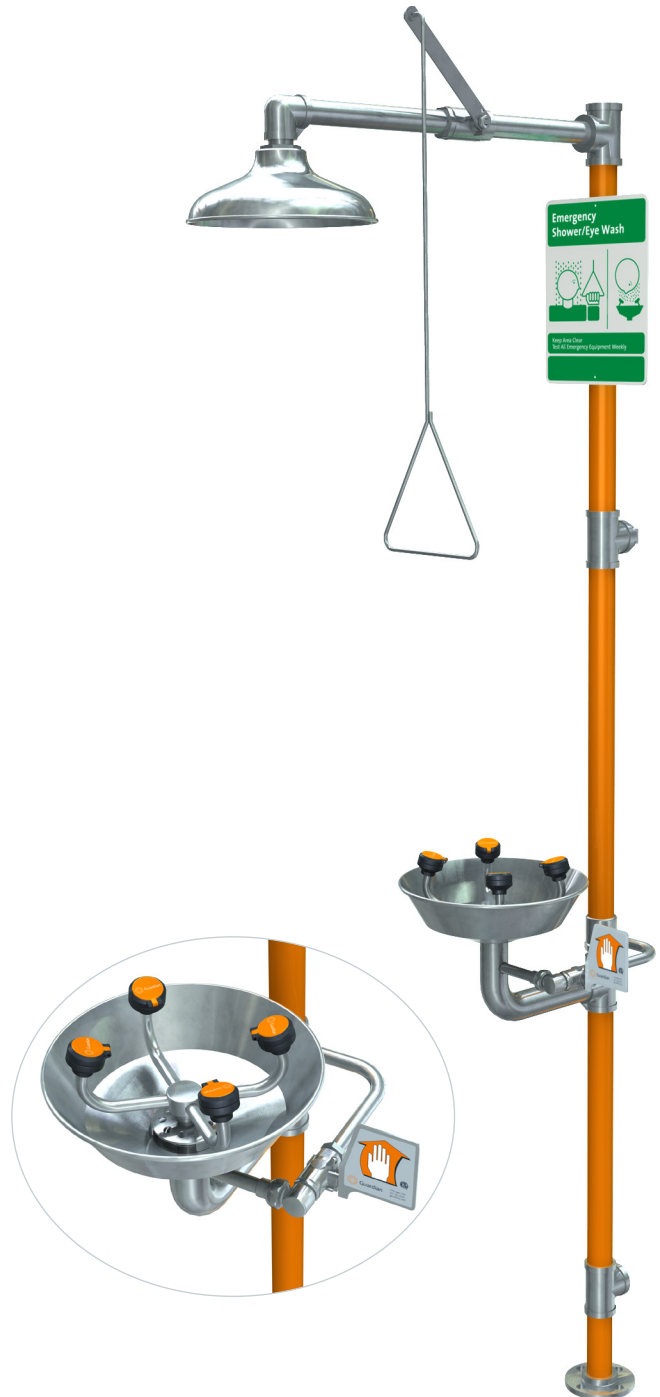
**WASTE:** 1 1/4" NPT female outlet.

**SIGN:** Furnished with ANSI-compliant identification sign.

**QUALITY ASSURANCE:** Valve and spray head assemblies are factory assembled and water tested prior to shipment.

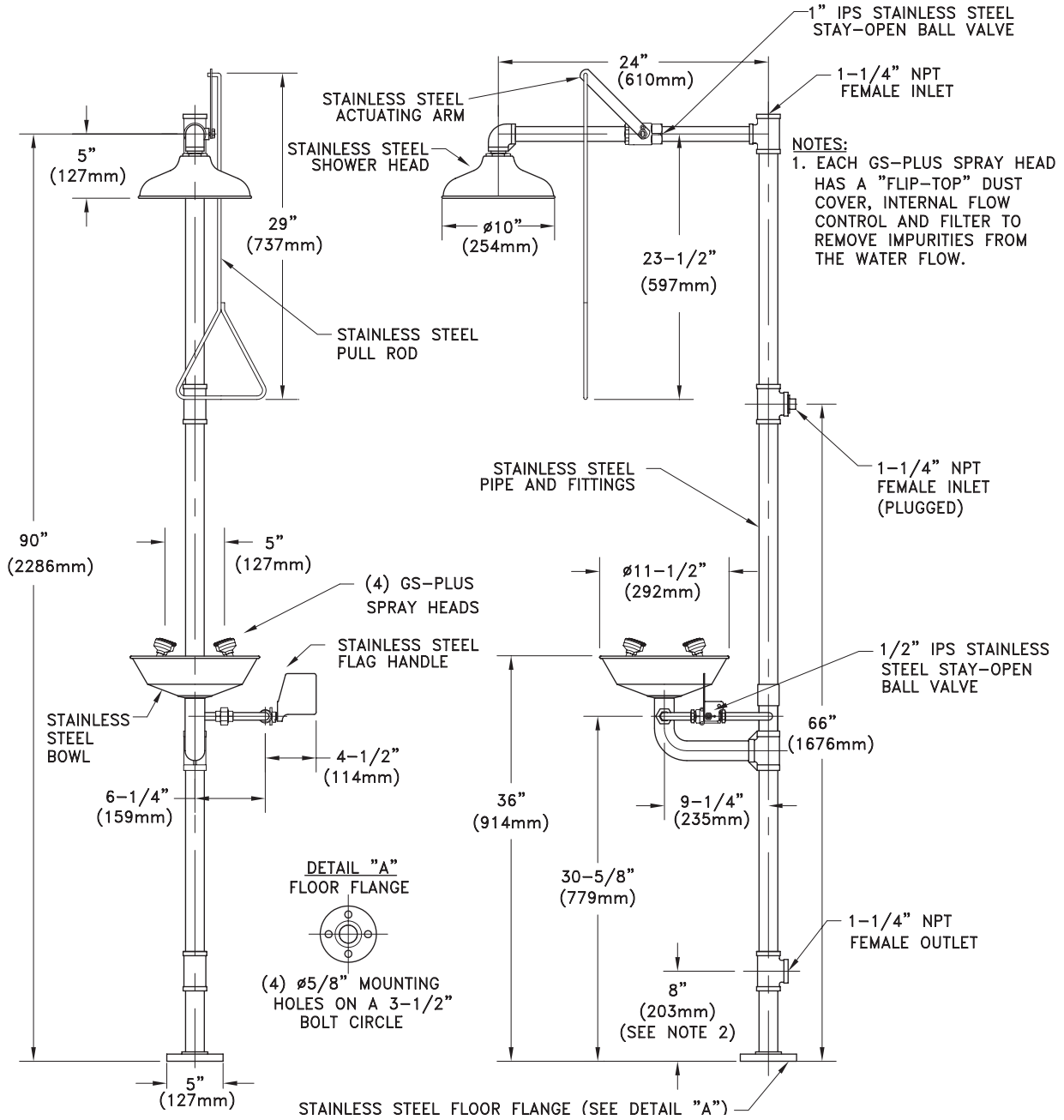
### Available Options

- **BC** Stainless steel cover for eye/face wash bowl.
- **FC20** Regulates shower flow rate to 20 GPM.
- **AP275-100 ELECTRIC LIGHT AND ALARM HORN**  
Light and alarm horn summon assistance when eye/face wash or shower is activated.
- **AP250-015 MODESTY CURTAIN**  
Modesty curtain for mounting on safety station.
- **TMV** G3800 thermostatic mixing valve precisely blends hot and cold water to deliver warm (tepid) water as required by ANSI Z358.1-2009.





### □ G1994 Safety Station with WideArea™ Eye/Face Wash, All-Stainless Steel Construction



THIS SPACE FOR ARCHITECT/ENGINEER APPROVAL

Due to continuing product improvement, the information contained in this document is subject to change without notice. All dimensions are ± 1/4" (6mm). rev. 0112

Sign Included

