



- **G1893** Eyewash, Deck Mounted 90° Swivel, All-Stainless Steel, Right Hand Mounting
- **G1893LH** Eyewash, Deck Mounted 90° Swivel, All-Stainless Steel, Left Hand Mounting



APPLICATION: All-stainless steel eyewash for mounting on counter next to sink. Spray heads swivel 90 degrees from storage to operational position. Unit is constructed entirely in stainless steel. Ideal for use in highly corrosive environments, cleanrooms and pharmaceutical applications.

SPRAY HEAD ASSEMBLY: Two GS-Plus™ spray heads. Each head has a “flip top” dust cover, internal flow control and filter to remove impurities from the water flow.

VALVE: 1/2" IPS stainless steel stay-open ball valve. Valve has stainless steel ball and TFE seals.

MOUNTING: Unit may be mounted on right side (G1893) or left side (G1893LH) of sink. Furnished with locknut and washer for securing unit to countertop.

CONSTRUCTION: Type 316 stainless steel.

SUPPLY: 1/2" NPT male inlet.

SIGN: ANSI-compliant identification sign.

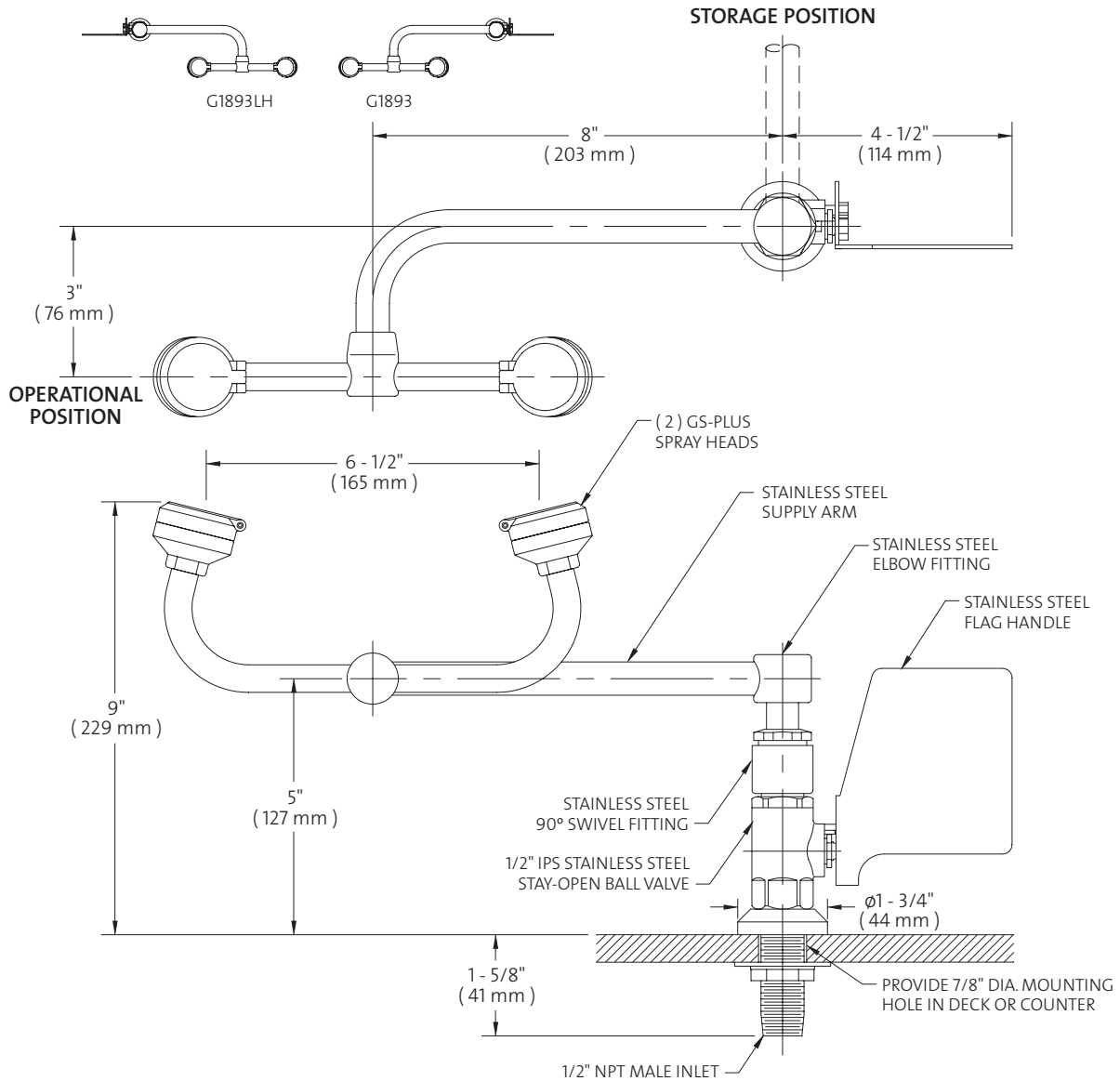
QUALITY ASSURANCE: Unit is completely assembled and water tested prior to shipment.

Available Options

- **TMV** G3600 thermostatic mixing valve precisely blends hot and cold water to deliver tepid water as required by ANSI Z358.1-2009. Refer to “Tempering Units” section for complete technical and product selection information.



- **G1893** Eyewash, Deck Mounted, 90° Swivel, All-Stainless Steel, Right Hand Mounting
- **G1893LH** Eyewash, Deck Mounted, 90° Swivel, All-Stainless Steel, Left Hand Mounting



NOTE:

1. EACH GS-PLUS SPRAY HEAD HAS A "FLIP-TOP" DUST COVER, INTERNAL FLOW CONTROL AND FILTER TO REMOVE IMPURITIES FROM THE WATER FLOW.

THIS SPACE FOR ARCHITECT/ENGINEER APPROVAL

Due to continuing product improvement, the information contained in this document is subject to change without notice. All dimensions are ± 1/4" (6mm). rev. 0112

Sign Included

