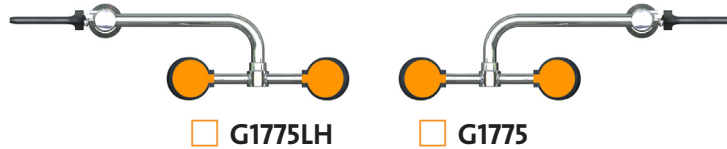




- G1775** Eye/Face Wash, Deck Mounted 90° Swivel, Right Hand Mounting
- G1775LH** Eye/Face Wash, Deck Mounted 90° Swivel, Left Hand Mounting



**APPLICATION:** Eye/face wash for mounting on counter next to sink. Spray heads swivel 90 degrees from storage to operational position. Water flow is activated by flag handle.

**SPRAY HEAD ASSEMBLY:** Two FS-Plus™ spray heads. Each head has a “flip top” dust cover, internal flow control and filter to remove impurities from the water flow.

**VALVE:** 1/2" IPS chrome plated brass stay-open ball valve. Valve is US-made with chrome plated brass ball and Teflon® seals.

**MOUNTING:** Unit may be mounted on right side (G1775) or left side (G1775LH) of sink. Furnished with locknut and washer for securing unit to countertop. Provide 7/8" diameter hole in counter.

**CONSTRUCTION:** Polished chrome plated brass.

**SUPPLY:** 1/2" NPT male inlet.

**SIGN:** ANSI-compliant identification sign.

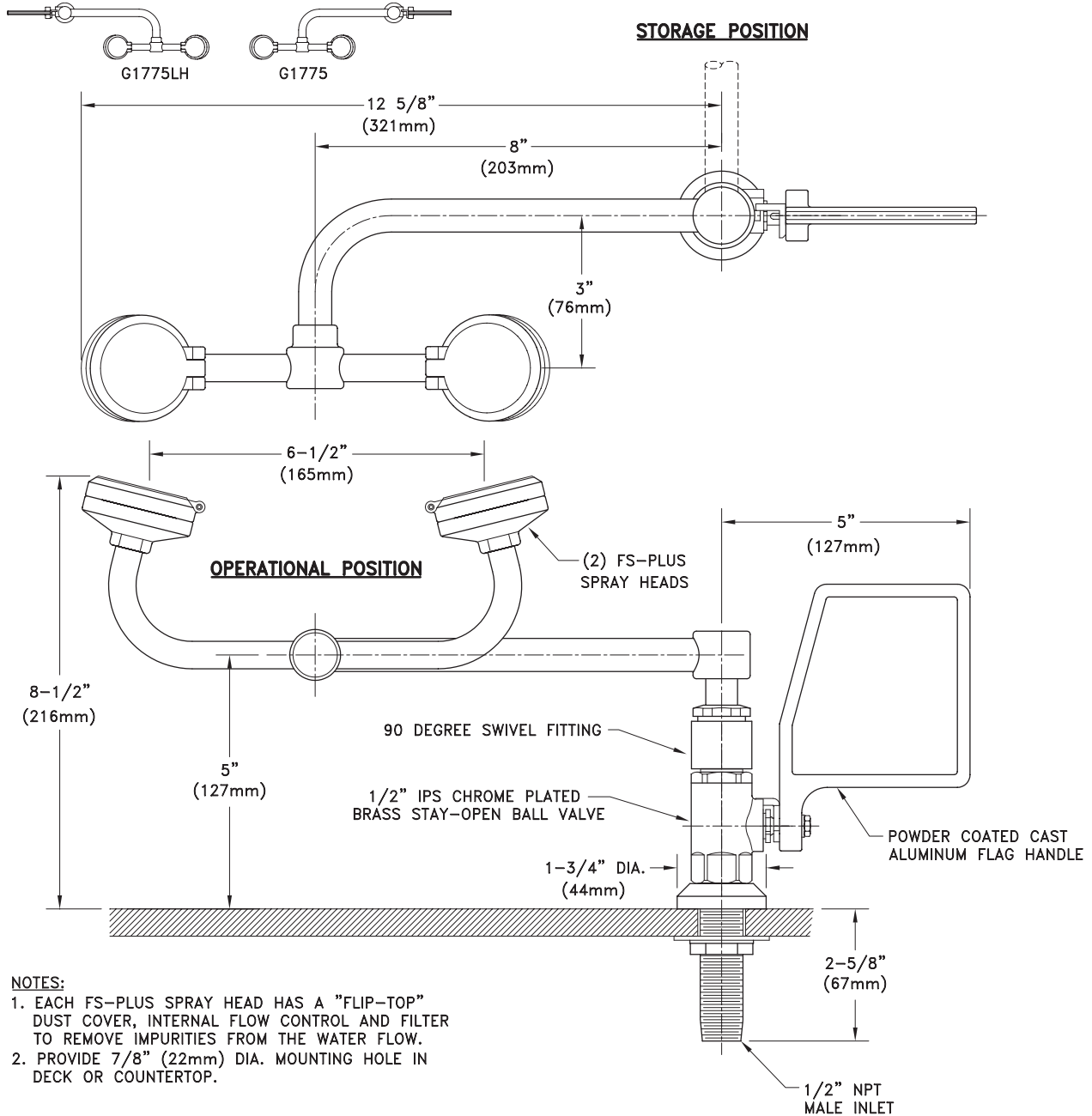
**QUALITY ASSURANCE:** Unit is completely assembled and water tested prior to shipment.

### Available Options

- DC** Stainless steel dust cover for each spray head.
- TMV** G3600 thermostatic mixing valve precisely blends hot and cold water to deliver warm (tepid) water as required by ANSI Z358.1-2009. Refer to “Tempering Units” section for complete technical and product selection information.



- **G1775** Eye/Face Wash, Deck Mounted 90° Swivel, Right Hand Mounting
- **G1775LH** Eye/Face Wash, Deck Mounted 90° Swivel, Left Hand Mounting



THIS SPACE FOR ARCHITECT/ENGINEER APPROVAL

Due to continuing product improvement, the information contained in this document is subject to change without notice. All dimensions are ± 1/4" (6mm). rev. 0112

Sign Included

