



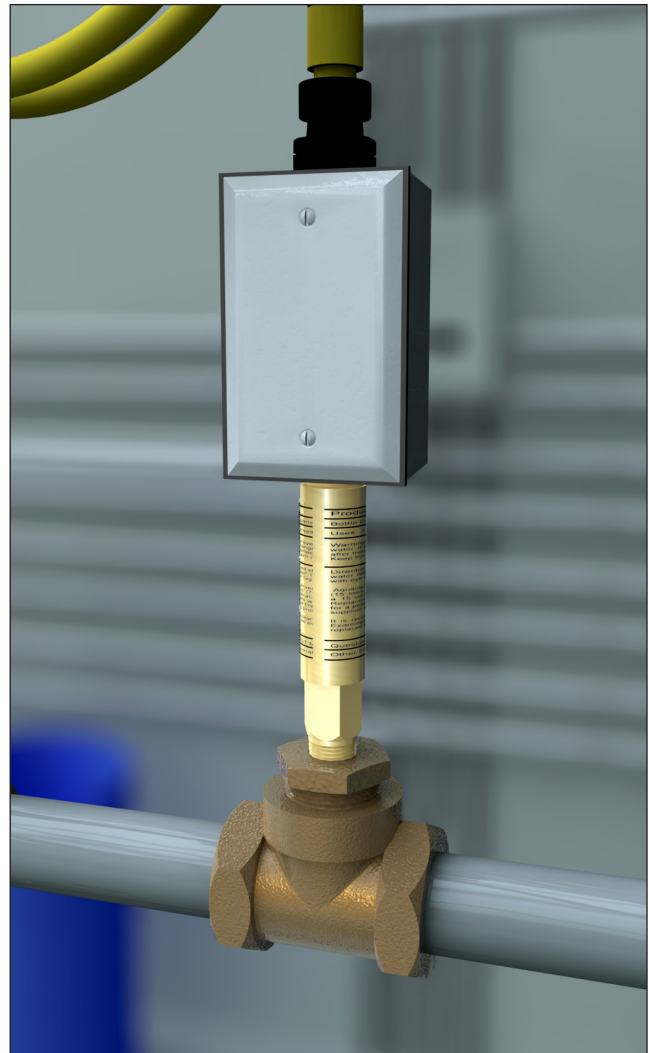
- **AP275-615** Flow Switch, 1 1/4" IPS
- **AP275-615C1D2** Same as Above Except Designed for Class 1 division 2 Environment

APPLICATION: Single pole, double throw flow switch for use with emergency equipment. Flow switch is installed in water supply line upstream of emergency unit. When unit is activated, switch senses the movement of water in the supply line. Switch can be used to activate alarm horn and light, and sends electrical signal to monitoring system.

INSTALLATION: Flow switch is mounted in tee fitting that is installed in water supply line to emergency unit. Switch must be installed with tee fitting in horizontal position, flow switch body in vertical position and at least 6" from closest fitting. Direction of flow is marked on switch body. Furnished with weatherproof electrical junction box with gasketed cover. Switch requires 5 amp, 125 volt electrical connection.

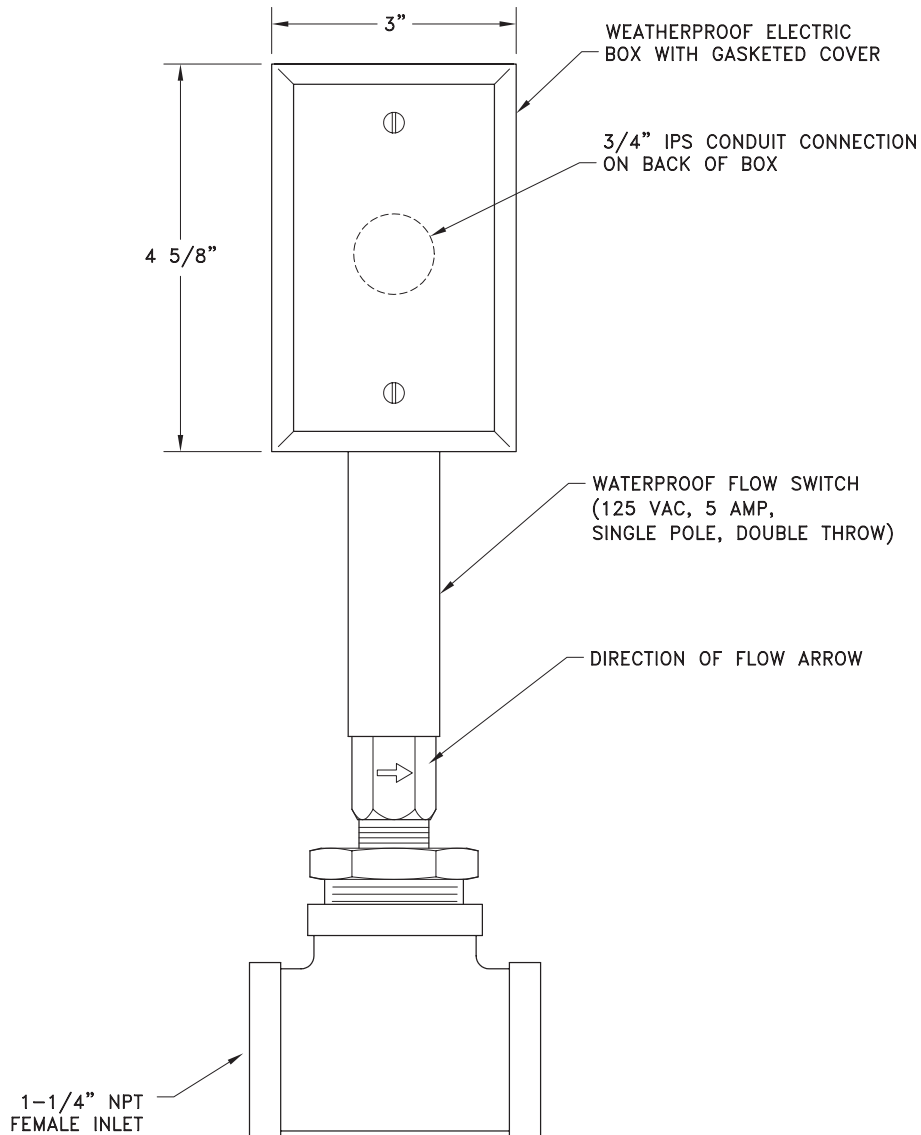
ACTIVATION: Activates at 2.4 GPM, deactivates at 2.0 GPM.

QUALITY ASSURANCE: Unit is fully assembled, wired and factory tested prior to shipment.





- **AP275-615** Flow Switch, 1 1/4" IPS
- **AP275-615C1D2** Same as Above Except Designed for Class 1 division 2 Environment



NOTE:
FLOW SWITCH MUST BE INSTALLED VERTICALLY IN A HORIZONTAL PIPE RUN, UPSTREAM OF UNIT AND AT LEAST 6" FROM FITTING.

THIS SPACE FOR ARCHITECT/ENGINEER APPROVAL

Due to continuing product improvement, the information contained in this document is subject to change without notice. All dimensions are $\pm 1/4"$ (6mm). rev. 0112